

#T504

## Myc-Tag Mouse Monoclonal Antibody

**Catalog:** #T504-1 50µl **Orders:** [order@signalwayantibody.com](mailto:order@signalwayantibody.com)  
#T504-2 100µl **Support:** [tech@signalwayantibody.com](mailto:tech@signalwayantibody.com)  
**Storage:** Store at 4°C/1 year **Web:** [www.signalwayantibody.com](http://www.signalwayantibody.com)



Application	Species Reactivity	Source	Molecular Wt.
WB		Mouse Monoclonal Ab	

**Description:** Antibodies were produced from mice ascites by injecting mice with a monoclonal cell line which was fused by mouse spleen and SP2/0 myeloma cell. Spleen cells were isolated from mice by immunizing with synthetic peptide and KLH conjugates.

**Specificity:** The mouse mAb detects transfected proteins containing the Myc epitope tag. The antibody recognizes the Myc-tag fused to either the amino- or carboxy- terminus of targeted proteins in transfected cells.

**Immunogen:** Peptide sequence around aa. 410-419 (EQKLISEEDL) derived from human c-Myc.

**Formulation:** Supplied in mice ascites

**Synonyms:**

**Accession No.:** Swiss-Prot#: NCBI Gene#: NCBI Protein#: NP\_001170825.1

**Background:** Epitope tags are artificial epitopes useful for the labeling and detection of proteins. Epitope tags - short amino acid sequences are 'fused' to the N- or C-terminus of the protein.

**References:**

Munro, S. and Pelham, H.R. (1984) EMBO J. 3, 3087-3093.

**Citation:**

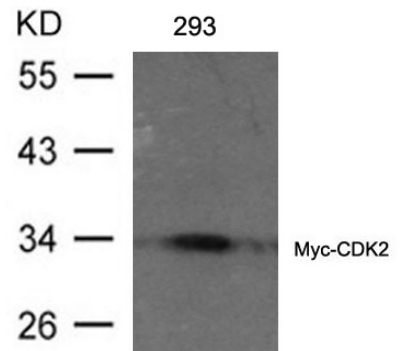
If you publish research using #T504 please [let us know](#).

**Related Pathway:** Tag antibody

**Note:** For western blotting, incubate membrane with diluted antibody in 5% nonfat milk, 1X TBS, 0.1% Tween-20 at 4°C with gentle shaking, overnight.

### Recommended Dilutions:

Western blotting 1:500~1:1000



Western blot analysis of extracts from 293 cells transfected with Myc-CDK2 using Myc-Tag mouse mAb #T504.