

#T503

Anti-DYKDDDDK Polyclonal Antibody

Catalog: #T503-1 50µl **Orders:** order@signalwayantibody.com
#T503-2 100µl **Support:** tech@signalwayantibody.com
Storage: Store at -20°C/1 year **Web:** www.signalwayantibody.com



Application	Species Reactivity	Source	Molecular Wt.
WB		Rabbit Polyclonal Ab	KD

Description: Antibodies were produced by immunizing rabbits with synthetic peptide and KLH conjugates. Antibodies were purified by affinity-chromatography using epitope-specific peptide.

Specificity: The antibody detects transfected proteins containing DYKDDDDK tag. The antibody recognizes the DYKDDDDK-tag fused to either the amino- or carboxy-terminus of targeted proteins in transfected cells.

Immunogen: Peptide sequence (DYKDDDDK) derived from Human.

Formulation: Supplied at 1.0mg/mL in phosphate buffered saline (without Mg²⁺ and Ca²⁺), pH 7.4, 150mM NaCl, 0.02% sodium azide and 50% glycerol.

Synonyms:

Accession No.: Swiss-Prot#: NCBI Gene#: NCBI Protein#:

Background: Epitope tags are artificial epitopes useful for the labeling and detection of proteins. Epitope tags - short amino acid sequences are 'fused' to the N- or C-terminus of the protein.

References:

erpe K. (2003) Appl Microbiol Biotechnol; 60(5):523-533.
Einhauer A, et al. (2001) J Biochem Biophys Methods; 49(1-3):455-465.
Brizzard, B.L. et al. (1994) Biotechniques; 16:730-735.

Citation:

Juliette Gafni, Xin Cong, Sylvia F. Chen, et al. Calpain-1 Cleaves and Activates Caspase-7J. Biol. Chem., 284, 25441 - 25449.(2009)

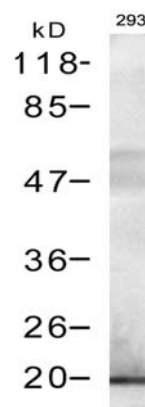
If you publish research using #T503 please [let us know](#).

Related Pathway: Tag antibody

Note: For western blotting, incubate membrane with diluted antibody in 5% nonfat milk, 1X TBS, 0.1% Tween-20 at 4°C with gentle shaking, overnight.

Recommended Dilutions:

Western blotting 1:500~1:1000



Western blot analysis of extracts from 293 cells transfected with DYKDDDDK-tagged Bad using Anti-DYKDDDDK Polyclonal Antibody #T503.