

#T501

HA-Tag Rabbit Polyclonal Antibody

Catalog: #T501-1 50µl **Orders:** order@signalwayantibody.com
#T501-2 100µl **Support:** tech@signalwayantibody.com
Storage: Store at -20°C/1 year **Web:** www.signalwayantibody.com



Application	Species Reactivity	Source	Molecular Wt.
WB		Rabbit Polyclonal Ab	KD

Description: Antibodies were produced by immunizing rabbits with synthetic peptide and KLH conjugates. Antibodies were purified by affinity-chromatography using epitope-specific peptide.

Specificity: The antibody detects HA-tagged proteins overexpressed in cells. The antibody recognizes the HA-tag fused to either the amino- or carboxy-terminus of targeted proteins in transfected cells.

Immunogen: Peptide sequence (Y-P-Y-D-V-P-D-Y-A).

Formulation: Supplied at 1.0mg/mL in phosphate buffered saline (without Mg²⁺ and Ca²⁺), pH 7.4, 150mM NaCl, 0.02% sodium azide and 50% glycerol.

Synonyms:

Accession No.: Swiss-Prot#: NCBI Gene#: NCBI Protein#:

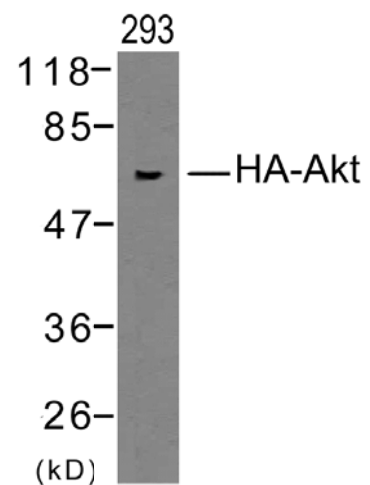
Background: Epitope tags are artificial epitopes useful for the labeling and detection of proteins. Epitope tags - short amino acid sequences are 'fused' to the N- or C-terminus of the protein.

References:

Field, J. et al. (1988) Mol. Cell. Biol. 8, 2159–2165.

Recommended Dilutions:

Western blotting 1:500~1:1000



Western blot analysis of extracts from 293 cells transfected with HA-tagged Akt using HA-Tag Rabbit polyclonal antibody #T501.

Citation:

If you publish research using #T501 please [let us know](#).

Related Pathway: Tag antibody

Note: For western blotting, incubate membrane with diluted antibody in 5% nonfat milk, 1X TBS, 0.1% Tween-20 at 4°C with gentle shaking, overnight.