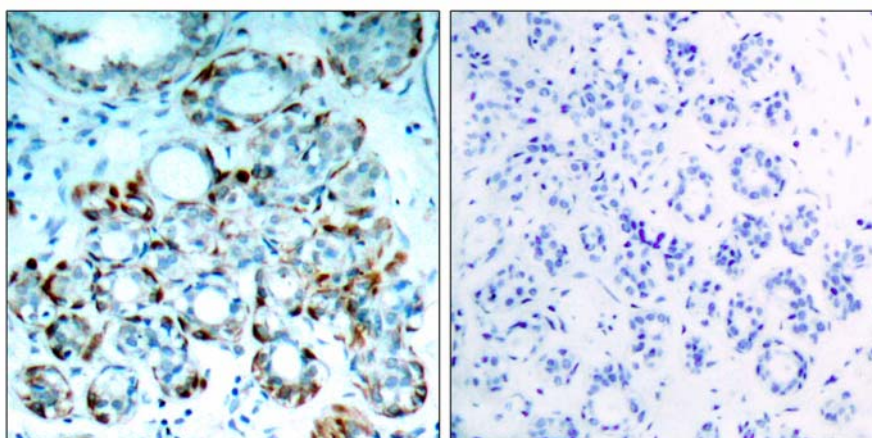


- Catalog Number:** 51288
- Amount:** 100µg/100µl
- Form of Peptide:** Peptide in 10 mM phosphate buffered saline (without Mg²⁺ and Ca²⁺), pH 7.4, 150mM NaCl, 0.1 mM EDTA, 1 mg/ml BSA, 5% DMF and 5% glycerol.
- Peptide Information:** The synthesized phosphopeptide was derived from human BIM around the phosphorylation site of serine 69 (P-A-S^P-P-G).
- Storage:** Store at -20°C.
- Quality Control:** The quality of the peptide was evaluated by reversed-phase HPLC and mass spectrometry.
- Specificity:** The peptide specifically blocks the signal of BIM (phospho-Ser69) antibody (#11288) completely in IHC.
- Applications:** For Western blotting: add 10 µl of antibody and 10 µl of blocking peptide to 10 ml of antibody dilution buffer, and incubate at 4°C over night or at room temperature for 2 hours before allowing to react with the blot.
- References:** Fukazawa H, et al. (2004) Mol Cancer Ther ; 3(10): 1281-1288
Luciano F, et al. (2003) Oncogene ; 22(43): 6785-6793.



P-Peptide

-

+

Immunohistochemical analysis of paraffin-embedded human breast carcinoma tissue, using BIM (phospho-Ser69) antibody (#11288).