



CREB (Phospho-Ser129) Antibody Blocking Peptide

#51273

Catalog Number: 51273-1, 51273-2

Amount: 50µg/50µl, 100µg/100µl

Form of Peptide: Peptide in 10 mM phosphate buffered saline (without Mg²⁺ and Ca²⁺), pH 7.4, 150mM NaCl, 0.1 mM EDTA, 1 mg/ml BSA, 5% DMF and 5% glycerol.

Peptide Information: The synthesized phosphopeptide was derived from human CREB around the phosphorylation site of 129 (I-L-S^P-R-R).

Storage: Store at -20°C.

Quality Control: The quality of the peptide was evaluated by reversed-phase HPLC and mass spectrometry.

Specificity: The peptide specifically blocks the signal CREB (phospho-Ser129) antibody (#11273) completely in Western blotting and IHC.

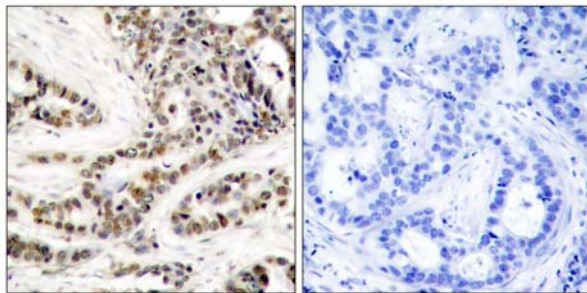
Applications: For Western blotting: add 10 µl of antibody and 10 µl of blocking peptide to 10 ml of antibody dilution buffer, and incubate at 4°C over night or at room temperature for 2 hours before allowing to react with the blot.

References: Chrystelle V. Garat, et al. (2006) Mol. Cell. Biol ; 26: 4934 - 4948.

Lilah Rothem, et al. (2004) Mol. Pharmacol ; 66: 1536 - 1543.

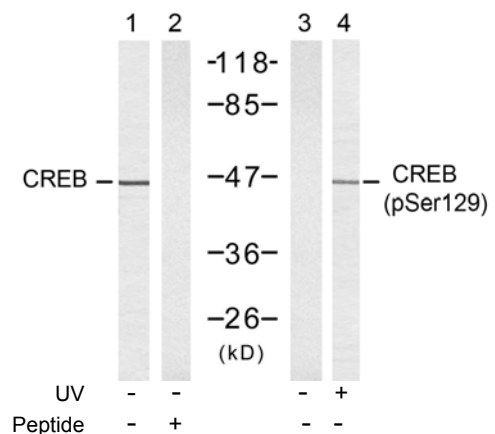
Darren R. Tyson, et al. (2002) Endocrinology; 143: 674.

Kyung-Woo Park, et al. (2003) Arterioscler. Thromb. Vasc. Biol ; 23: 1364.



P-Peptide - +

Immunohistochemical analysis of paraffin-embedded human breast carcinoma tissue using CREB (phospho-Ser129) antibody (#11273).



Western blot analysis of extracts from 293 cells untreated or treated with UV, using CREB (Ab-129) antibody (#21265, Lane 1 and 2) and CREB (phospho-Ser129) antibody (#11273, Lane 1 and 2).

For Research Use Only