



Cortactin (Phospho-Tyr466) Antibody Blocking Peptide

#51272

Catalog Number: 51272-1, 51272-2

Amount: 50µg/50µl, 100µg/100µl

Form of Peptide: Peptide in 10 mM phosphate buffered saline (without Mg²⁺ and Ca²⁺), pH 7.4, 150mM NaCl, 0.1 mM EDTA, 1 mg/ml BSA, 5% DMF and 5% glycerol.

Peptide Information: The synthesized phosphopeptide was derived from human Cortactin around the phosphorylation site of 466 (P-V-Y^P-E-T).

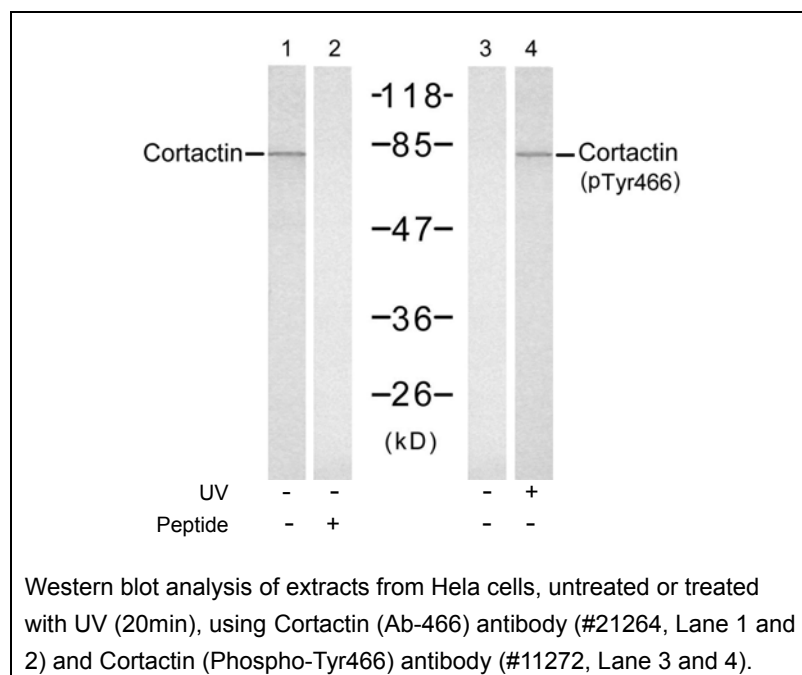
Storage: Store at -20°C.

Quality Control: The quality of the peptide was evaluated by reversed-phase HPLC and mass spectrometry.

Specificity: The peptide specifically blocks the signal Cortactin (Phospho-Tyr466) antibody (#11272) completely in Western blotting .

Applications: For Western blotting: add 10 µl of antibody and 10 µl of blocking peptide to 10 ml of antibody dilution buffer, and incubate at 4°C over night or at room temperature for 2 hours before allowing to react with the blot.

References: Luo C, et al. (2006) J Biol Chem ; 281(40):30081-30093
Head JA, et al. (2003) Mol Biol Cell ;14(8):3216-3229
Li Y, et al. (2000) J Biol Chem ; 275(47): 37187-37193
Kinley AW, et al. (2003) Curr Biol ; 13(5): 384-393



For Research Use Only