



## EGFR (Phospho-Tyr869) Antibody Blocking Peptide

#51229

**Catalog Number:** 51229-1, 51229-2

**Amount:** 50µg/50µl, 100µg/100µl

**Form of Peptide:** Peptide in 10 mM phosphate buffered saline (without Mg<sup>2+</sup> and Ca<sup>2+</sup>), pH 7.4, 150mM NaCl, 0.1 mM EDTA, 1 mg/ml BSA, 5% DMF and 5% glycerol.

**Peptide Information:** The synthesized phosphopeptide was derived from human EGFR around the phosphorylation site of 869 (K-E-Y<sup>P</sup>-H-A).

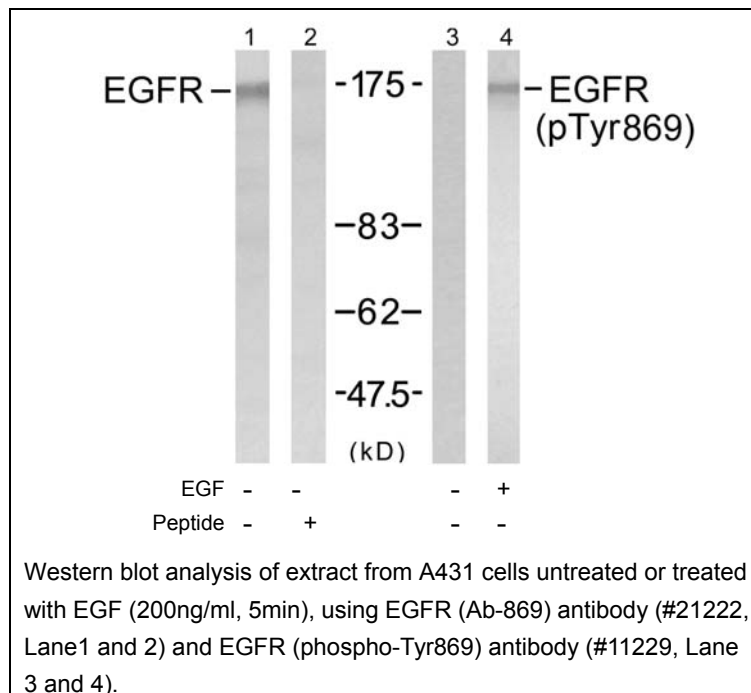
**Storage:** Store at -20°C.

**Quality Control:** The quality of the peptide was evaluated by reversed-phase HPLC and mass spectrometry.

**Specificity:** The peptide specifically blocks the signal of EGFR (phospho-Tyr869) antibody (#11229) completely in Western blotting.

**Applications:** For Western blotting: add 10 µl of antibody and 10 µl of blocking peptide to 10 ml of antibody dilution buffer, and incubate at 4°C over night or at room temperature for 2 hours before allowing to react with the blot.

**References:** Inoue A, et al. (2005) PLoS Med; 2(1): e13  
Sun H, et al. (2004) EMBO J; 23(1): 100-110  
Kanner SB, et al. (1991) Mol Cell Biol; 11(2): 713-720  
Wu TT, et al. (1998) Mol Biol Cell; 9(7): 1661-1674  
O'Rourke DM, et al. (1997) Proc Natl Acad Sci U S A; 94(7): 3250-3255  
Goldstein DJ, et al. (1994) J Virol; 68(7): 4432-4441



**For Research Use Only**