



## 4E-BP1 (Phospho-Thr45)Antibody Blocking Peptide

#51223

**Catalog Number:** 51223-1, 51223-2

**Amount:** 50µg/50µl, 100µg/100µl

**Form of Peptide:** Peptide in 10 mM phosphate buffered saline (without Mg<sup>2+</sup> and Ca<sup>2+</sup>), pH 7.4, 150mM NaCl, 0.1 mM EDTA, 1 mg/ml BSA, 5% DMF and 5% glycerol.

**Peptide Information:** The synthesized phosphopeptide was derived from human 4E-BP1 around the phosphorylation site of threonine 45 (S-T-T<sup>P</sup>-P-G).

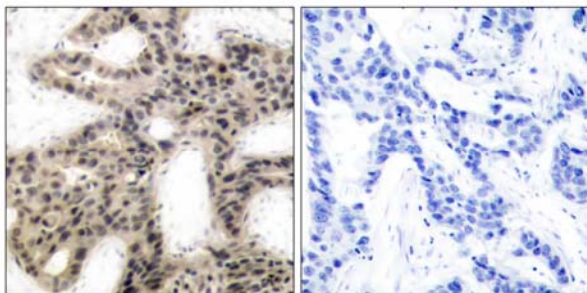
**Storage:** Store at -20°C.

**Quality Control:** The quality of the peptide was evaluated by reversed-phase HPLC and mass spectrometry.

**Specificity:** The peptide specifically blocks the signal of 4E-BP1 (Phospho-Thr45)Antibody (#11223) completely in Western blotting and IHC.

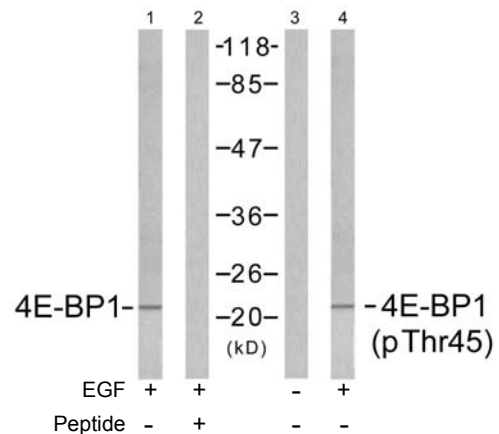
**Applications:** For Western blotting: add 10 µl of antibody and 10 µl of blocking peptide to 10 ml of antibody dilution buffer, and incubate at 4°C over night or at room temperature for 2 hours before allowing to react with the blot.

**References:** Gingras AC, et al. (1998) *Genes Dev* 12(4): 502-513.  
Brugarolas J, et al. (2004) *Genes Dev* 18(23): 2893-2904.  
Kumar V, et al. (2000) *EMBO J* 19(5): 1087-1097.  
Moody CA, et al. (2005) *J Virol* 79(9): 5499-5506.  
Burnett PE, et al. (1998) *Proc Natl Acad Sci U S A* 95(4): 1432-1437.



P-Peptide                      -                      +

Immunohistochemical analysis of paraffin-embedded human breast carcinoma tissue using 4E-BP1 (phospho-Thr45) antibody (#11223).



Western blot analysis of extracts from MDA435 cells untreated or treated with EGF (200nm, 5min), using 4E-BP1 (Ab-45) antibody (#21216, Lane1 and 2) and 4E-BP1 (phospho-Thr45) antibody (#11223, Lane 3 and 4).

**For Research Use Only**