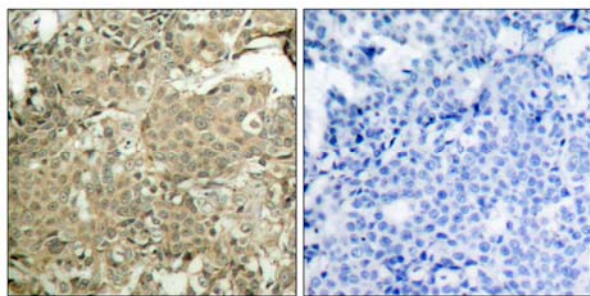
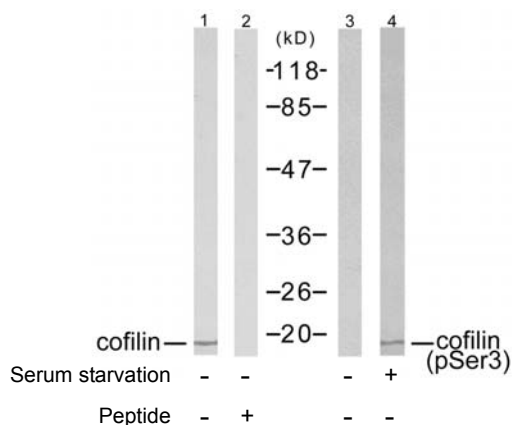


- Catalog Number:** 51139-1, 51139-2
- Amount:** 50µg/50µl, 100µg/100µl
- Form of Peptide :** Peptide in phosphate buffered saline (without Mg²⁺ and Ca²⁺), pH 7.4, 150mM NaCl, 0.02% sodium azide and 50% glycerol.
- Storage:** Store at -20°C.
- Quality Control:** The quality of the peptide was evaluated by reversed-phase HPLC and mass spectrometry.
- Peptide Information :** The synthesized phosphopeptide was derived from human cofilin around the phosphorylation site of serine 3 (M-A-S^P-G-V).
- Specificity:** The peptide specifically blocks the signal of cofilin (phospho-Ser3) antibody (#11139) completely in Western blotting and IHC.
- Applications:** For Western blotting: add 10 µl of antibody and 10 µl of blocking peptide to 10 ml of antibody dilution buffer, and incubate at 4°C over night or at room temperature for 2 hours before allowing to react with the blot.
- Swiss-Prot No. :** P23528
- References:** Kobayashi M, et al. (2006) EMBO J 25(4): 713-26.
Wang Y, et al. (2005) Biol Chem 280(13): 12683-9.
Smith-Beckerman DM, et al. (2005) Mol Cell Proteomics: 156-68.



P-Peptide - +

Immunohistochemical analysis of paraffin-embedded human breast carcinoma tissue using cofilin (phospho-Ser3) antibody (#11139).



Western blot analysis of extracts from COLO205 cells using cofilin (Ab-1022) antibody (#21164, Lane 1 and 2) and cofilin (phospho-Ser3) antibody (#11139, Lane 3 and 4).