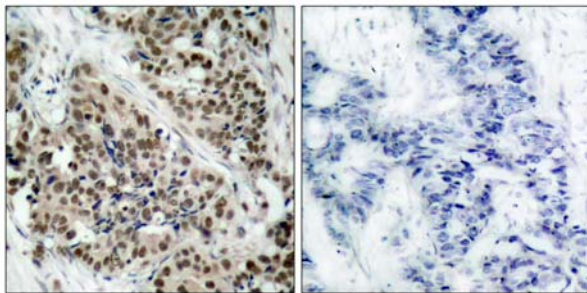




FKHR (Phospho-Ser256) Antibody Blocking Peptide

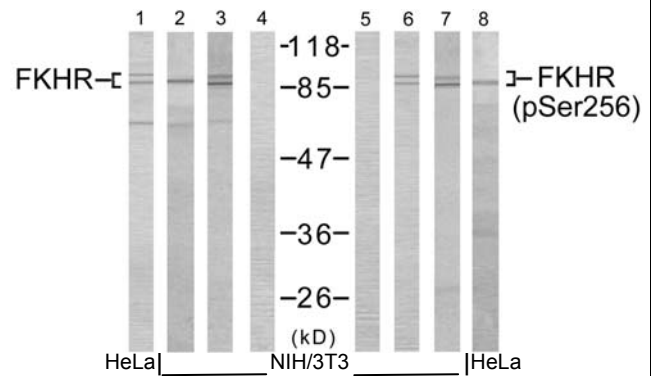
#51115

- Catalog Number:** 51115
- Amount:** 100µg/100µl
- Form of Peptide:** Peptide in 10 mM phosphate buffered saline (without Mg²⁺ and Ca²⁺), pH 7.4, 150mM NaCl, 0.1 mM EDTA, 1 mg/ml BSA, 5% DMF and 5% glycerol.
- Peptide Information:** The synthesized phosphopeptide was derived from human FKHR around the phosphorylation site of serine 256 (A-A-S^P-M-D).
- Storage:** Store at -20°C.
- Quality Control:** The quality of the peptide was evaluated by reversed-phase HPLC and mass spectrometry.
- Specificity:** The peptide specifically blocks the signal of FKHR (phospho-Ser256) antibody (#11115) completely in Western blotting and IHC.
- Applications:** For Western blotting: add 10 µl of antibody and 10 µl of blocking peptide to 10 ml of antibody dilution buffer, and incubate at 4°C over night or at room temperature for 2 hours before allowing to react with the blot.
- References:** Gan L, et al. (2005) J Neurochem; 93(5): 1209-19.
Smith WW, et al. (2005) J Cell Biol; 169(2): 331-9.
Di Maira G, et al. (2005) Cell Death Differ; 12(6): 668-77.
Horn S, et al. (2004) Leukemia; 18(11): 1839-49.



P-Peptide - +

Immunohistochemical analysis of paraffin- embedded human breast carcinoma tissue using FKHR (phospho-Ser256) antibody (#11115).



	1	2	3	4	5	6	7	8	
HeLa	HeLa				NIH/3T3				HeLa
Serum	-	-	+	-	-	-	+	-	
EGF+Serum	+	-	-	-	-	-	-	+	
P-peptide	-	-	-	-	+	-	-	-	
Peptide	-	-	-	+	-	-	-	-	

Western blot analysis using FKHR (Ab-256) antibody (#21138, Lane 1, 2, 3 and 4) and FKHR (phospho- Ser256) antibody (#11115, Lane 5, 6, 7 and 8).

For Research Use Only