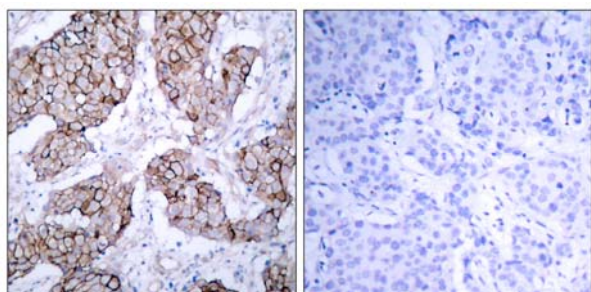




# EGFR (Phospho-Tyr1092) antibody Blocking peptide

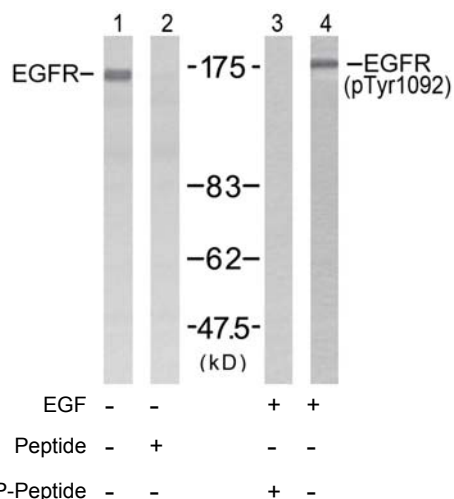
#51081

- Catalog Number:** 51081
- Amount:** 100µg/100µl
- Form of Peptide:** Peptide in 10 mM phosphate buffered saline (without Mg<sup>2+</sup> and Ca<sup>2+</sup>), pH 7.4, 150mM NaCl, 0.1 mM EDTA, 1 mg/ml BSA, 5% DMF and 5% glycerol.
- Peptide Information:** The synthesized phosphopeptide was derived from human EGFR around the phosphorylation site of tyrosine 1092 (P-E-Y<sup>P</sup>-I-N).
- Storage:** Store at -20°C.
- Quality Control:** The quality of the peptide was evaluated by reversed-phase HPLC and mass spectrometry.
- Specificity:** The peptide specifically blocks the signal of EGFR (Phospho-Tyr1092) antibody (#11081) completely in Western blotting and IHC.
- Applications:** For Western blotting: add 10 µl of antibody and 10 µl of blocking peptide to 10 ml of antibody dilution buffer, and incubate at 4°C over night or at room temperature for 2 hours before allowing to react with the blot.
- References:** Buerger C, et al. (2003) J Biol Chem; 278(39): 37610-21.  
Wang XQ, (2003) J Biol Chem; 278(49): 48770-8.  
Saito T, et al. (2004) Endocrinology; 145(9): 4232-43.  
Pao W, et al. (2004) Proc Natl Acad Sci U S A; 101(36): 13306-11.



P-Peptide            -                                    +

Immunohistochemical analysis of paraffin- embedded human breast carcinoma tissue using EGFR (phospho-Tyr1092) antibody (#11081).



Western blot analysis of extracts from HUVEC cells using EGFR (Ab-1092) antibody (#21074, Lane 1 and 2) and EGFR (phospho-Tyr1092) antibody (#11081, Lane 3 and 4).

**For Research Use Only**