



EGFR (Phospho-Ser1070) antibody Blocking peptide

#51080

Catalog Number: 51080

Amount: 100µg/100µl

Form of Peptide: Peptide in 10 mM phosphate buffered saline (without Mg²⁺ and Ca²⁺), pH 7.4, 150mM NaCl, 0.1 mM EDTA, 1 mg/ml BSA, 5% DMF and 5% glycerol.

Peptide Information: The synthesized phosphopeptide was derived from human EGFR around the phosphorylation site of serine 1070 (R-Y-S^P-S-D).

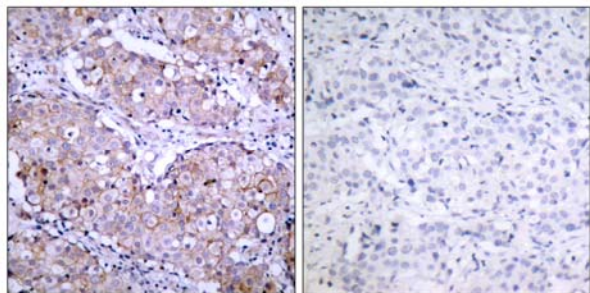
Storage: Store at -20°C.

Quality Control: The quality of the peptide was evaluated by reversed-phase HPLC and mass spectrometry.

Specificity: The peptide specifically blocks the signal of EGFR (Phospho-Ser1070) antibody (#11080) completely in Western blotting and IHC.

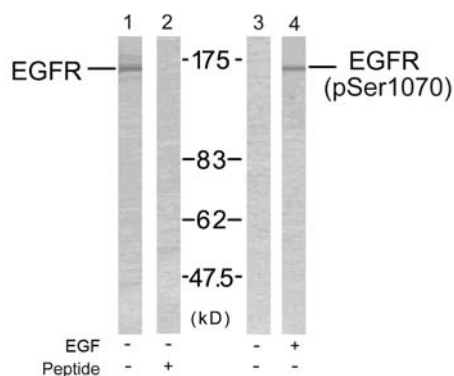
Applications: For Western blotting: add 10 µl of antibody and 10 µl of blocking peptide to 10 ml of antibody dilution buffer, and incubate at 4°C over night or at room temperature for 2 hours before allowing to react with the blot.

References: Feinmesser RL, et al. (1999) J Biol Chem; 274(23): 16168-73.
Gamou S, et al. (1995) FEBS Lett; 357(2): 161-4.
Gamou S, et al. (1994) J Cell Physiol; 158(1): 151-9.
Heisermann GJ, et al. (1988) J Biol Chem; 263(26): 13152-8.



P-Peptide - +

Immunohistochemical analysis of paraffin- embedded human breast carcinoma tissue, using EGFR (phospho-Ser1070) antibody (#11080).



Western blot analysis of extract from SK-OV3 cells untreated or treated with EGF using EGFR (Ab-1070) antibody (#21073, Lane 1 and 2) and EGFR (phospho- Ser1070) antibody (#11080, Lane 3 and 4).

For Research Use Only