



Ezrin(Phospho-Tyr353) antibody Blocking peptide

#51063

Catalog Number: 51063

Amount: 100µg/100µl

Form of Peptide: Peptide in 10 mM phosphate buffered saline (without Mg²⁺ and Ca²⁺), pH 7.4, 150mM NaCl, 0.1 mM EDTA, 1 mg/ml BSA, 5% DMF and 5% glycerol.

Peptide Information: The synthesized phosphopeptide was derived from human Ezrin around the phosphorylation site of tyrosine 353 (Q-D-Y^P-E-E).

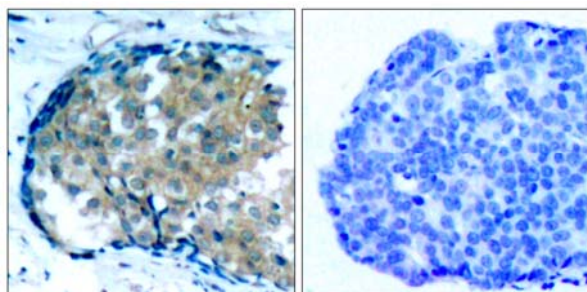
Storage: Store at -20°C.

Quality Control: The quality of the peptide was evaluated by reversed-phase HPLC and mass spectrometry.

Specificity: The peptide specifically blocks the signal of Ezrin(Phospho-Tyr353) antibody (#11063) completely in Western blotting and IHC

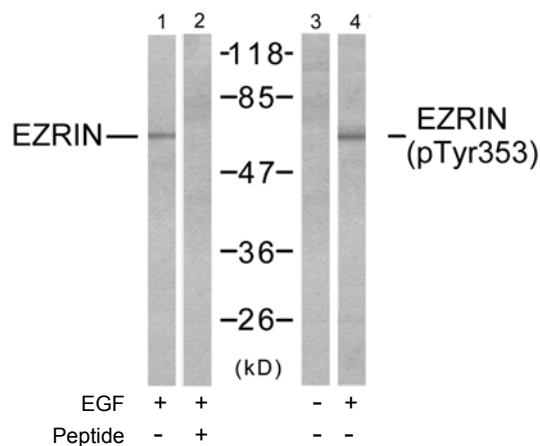
Applications: For Western blotting: add 10 µl of antibody and 10 µl of blocking peptide to 10 ml of antibody dilution buffer, and incubate at 4°C over night or at room temperature for 2 hours before allowing to react with the blot.

References: Zhao H, et al. (2004) Proc Natl Acad Sci U S A 101 (25): 9485-9490.
Wang Q, et al. (2003) J Biol Chem 278(48): 47731-47743.
Gautreau A, et al. (1999) Proc Natl Acad Sci U S A 96(13): 7300-7305.
Crepaldi T, et al. (1997) J Cell Biol 138(2): 423-34.



P-Peptide - +

Immunohistochemical analysis of paraffin-embedded human breast carcinoma tissue, using Ezrin (phospho-Tyr353) antibody (#11063).



Western blot analysis of extracts from A431 cells, untreated or EGF-treated (200ng/ml, 30min), using Ezrin (Ab-353) antibody (#21094, Lane 1 and 2) and Ezrin (phospho-Tyr353) antibody (#11063, Lane 3 and 4).

For Research Use Only