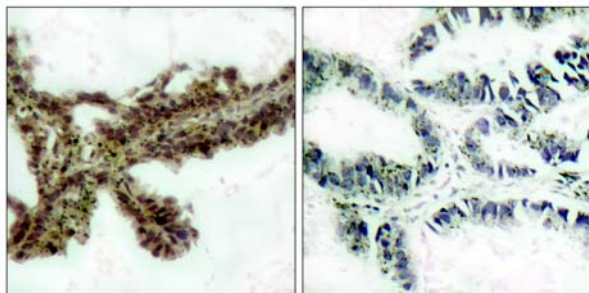




Akt (Phospho-Thr308) antibody Blocking peptide

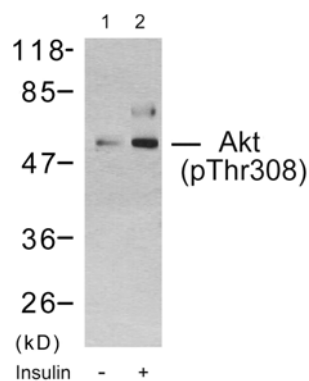
#51055

- Catalog Number:** 51055
- Amount:** 100µg/100µl
- Form of Peptide:** Peptide in 10 mM phosphate buffered saline (without Mg²⁺ and Ca²⁺), pH 7.4, 150mM NaCl, 0.1 mM EDTA, 1 mg/ml BSA, 5% DMF and 5% glycerol.
- Peptide Information:** The synthesized phosphopeptide was derived from human Akt around the phosphorylation site of threonine 308 (M-K-T^P-F-C).
- Storage:** Store at -20°C.
- Quality Control:** The quality of the peptide was evaluated by reversed-phase HPLC and mass spectrometry.
- Specificity:** The peptide specifically blocks the signal of Akt (Phospho-Thr308) antibody (#11055) completely in Western blotting and IHC.
- Applications:** For Western blotting: add 10 µl of antibody and 10 µl of blocking peptide to 10 ml of antibody dilution buffer, and incubate at 4°C over night or at room temperature for 2 hours before allowing to react with the blot.
- References:** Tremblay F, et al. (2005)Diabetes; 54(9): 2674-84.
Xu BE, et al. (2005)J Biol Chem; 280(40): 34218-23.
Samuels Y, et al. (2005)Cancer Cell; 7(6): 561-73.
Di Maira G, et al. (2005)Cell Death Differ; 12(6): 668-77.



P-Peptide - +

Immunohistochemical analysis of paraffin-embedded human lung carcinoma tissue, using Akt (phospho-Thr308) antibody (#11055).



Western blot analysis using Akt (phospho-Thr308) antibody (#11055): Lane1: The extract from 293 cells untreated; Lane 2: The extract from 293 cells treated with insulin.

For Research Use Only