



## ATF-2 (Phospho-Thr73 or 55) Antibody Blocking Peptide

#51032

**Catalog Number:** 51032

**Amount:** 100µg/100µl

**Form of Peptide:** Peptide in 10 mM phosphate buffered saline (without Mg<sup>2+</sup> and Ca<sup>2+</sup>), pH 7.4, 150mM NaCl, 0.1 mM EDTA, 1 mg/ml BSA, 5% DMF and 5% glycerol.

**Peptide Information:** The synthesized phosphopeptide was derived from human ATF-2 around the phosphorylation site of threonine 73 or 55 (T-P-T<sup>P</sup>-R-F).

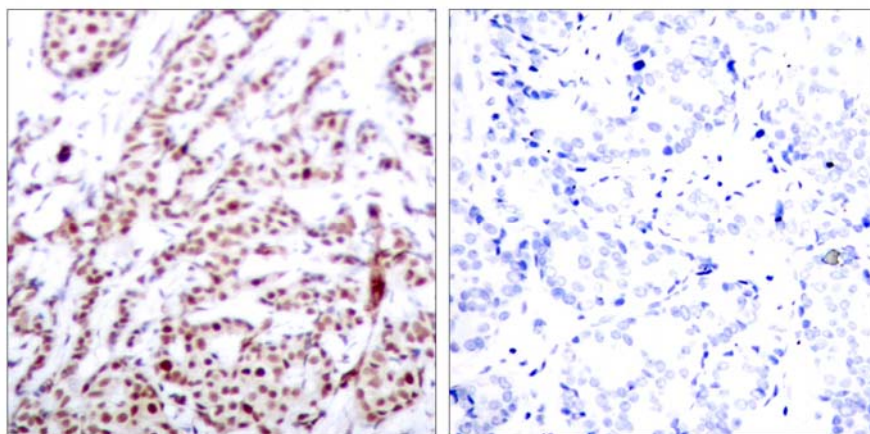
**Storage:** Store at -20°C.

**Quality Control:** The quality of the peptide was evaluated by reversed-phase HPLC and mass spectrometry.

**Specificity:** The peptide specifically blocks the signal of ATF-2 (phospho-Thr73 or 55) antibody (#11032) completely in IHC.

**Applications:** For Western blotting: add 10 µl of antibody and 10 µl of blocking peptide to 10 ml of antibody dilution buffer, and incubate at 4°C over night or at room temperature for 2 hours before allowing to react with the blot.

**References:** Beausoleil S A, et al. (2004) Proc Natl Acad Sci U S A. 101(33): 12130-12135.  
Abdel-Hafiz H A, et al. (1992) Mol Endocrinol. 6: 2079-2089.  
Gupta S, et al. (1995) Science. 267: 389-393.  
Van Dam H, et al. (1995) EMBO J. 14(8): 1798-1811.  
Livingstone C, et al. (1995) EMBO J. 14: 1785-1797.



P-Peptide

-

+

Immunohistochemical analysis of paraffin-embedded human breast carcinoma tissue using ATF-2 (phospho-Thr73 or 55) antibody (#11032).

**For Research Use Only**