



## ATF-2(Phospho-Thr69 or 51) Antibody Blocking Peptide

#51030

**Catalog Number:** 51030

**Amount:** 100µg/100µl

**Form of Peptide:** Peptide in 10 mM phosphate buffered saline (without Mg<sup>2+</sup> and Ca<sup>2+</sup>), pH 7.4, 150mM NaCl, 0.1 mM EDTA, 1 mg/ml BSA, 5% DMF and 5% glycerol.

**Peptide Information:** The synthesized phosphopeptide was derived from human ATF-2 around the phosphorylation site of threonine 69 or 51 (D-Q-T<sup>P</sup>-P-T).

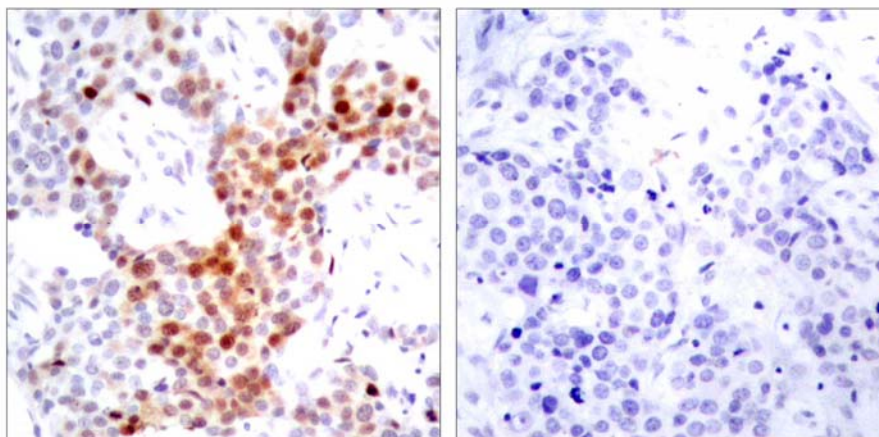
**Storage:** Store at -20°C.

**Quality Control:** The quality of the peptide was evaluated by reversed-phase HPLC and mass spectrometry.

**Specificity:** The peptide specifically blocks the signal of ATF-2 (phospho-Thr69or51) antibody (#11030) completely in IHC.

**Applications:** For Western blotting: add 10 µl of antibody and 10 µl of blocking peptide to 10 ml of antibody dilution buffer, and incubate at 4°C over night or at room temperature for 2 hours before allowing to react with the blot.

**References:** Sevilla A, et al. (2004) J Biol Chem. 279(26):27458-27465.  
Alsayed Y, et al. (2001) J Biol Chem. 276(6): 4012-4019.  
Abdel-Hafiz H A, et al. (1992) Mol Endocrinol. 6: 2079-2089.  
Gupta S, et al. (1995) Science. 267: 389-393.



P-Peptide

-

+

Immunohistochemical analysis of paraffin-embedded human breast carcinoma tissue using ATF-2 (phospho-Thr69 or 51) antibody (#11030).

**For Research Use Only**