



Elk-1 (Phospho-Ser383) antibody Blocking peptide

#51004

Catalog Number: 51004

Amount: 100µg/100µl

Form of Peptide: Peptide in 10 mM phosphate buffered saline (without Mg²⁺ and Ca²⁺), pH 7.4, 150mM NaCl, 0.1 mM EDTA, 1 mg/ml BSA, 5% DMF and 5% glycerol.

Peptide Information: The synthesized phosphopeptide was derived from human Elk-1 around the phosphorylation site of serine 383 (T-L-S^P-P-I).

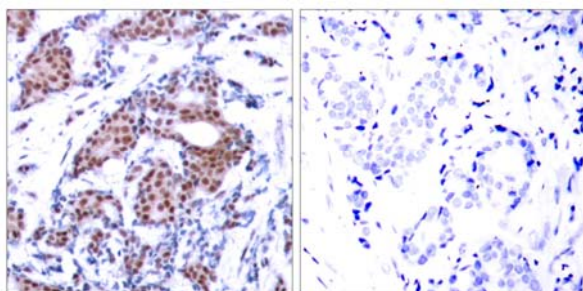
Storage: Store at -20°C.

Quality Control: The quality of the peptide was evaluated by reversed-phase HPLC and mass spectrometry.

Specificity: The peptide specifically blocks the signal of Elk-1 (phospho-Ser383) antibody (#11004) completely in Western blotting and IHC.

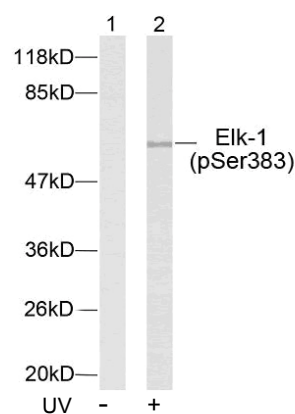
Applications: For Western blotting: add 10 µl of antibody and 10 µl of blocking peptide to 10 ml of antibody dilution buffer, and incubate at 4°C over night or at room temperature for 2 hours before allowing to react with the blot.

References: Xing J, et al. (1996) Science. 273(5277): 959-963.
Janknecht R, et al. (1993) EMBO J. 12(13): 5097-5104.
Marais R, et al. (1993) Cell 73: 381-393.
Kortenjann M, et al. (1994) Mol Cell Biol. 14: 4815-4824.
Cavigelli M, et al. (1995) EMBO J. 14: 5957-5964.



P-Peptide - +

Immunohistochemical analysis of paraffin-embedded human breast carcinoma tissue using Elk-1 (phospho-Ser383) antibody (#11004).



Western blot analysis of extract from HeLa cells untreated or treated with UV using Elk-1 (phospho-Ser383) antibody (#11004).

For Research Use Only