

#21551

EGFR (Ab-1197) Goat Polyclonal Antibody

Catalog: #21551-1 50µl **Orders:** order@signalwayantibody.com
#21551-2 100µl **Support:** tech@signalwayantibody.com
Storage: Store at -20°C/1 year **Web:** www.signalwayantibody.com



Application	Species Reactivity	Source	Molecular Wt.
WB	Human Mouse Rat	Goat Polyclonal Ab	175KD

Description: Antibodies were produced by immunizing goat with synthetic peptide and KLH conjugates. Antibodies were purified by affinity-chromatography using epitope-specific peptide.

Specificity: The antibody detects endogenous level of total EGFR protein.

Immunogen: Peptide sequence around aa.1195~1199 (A-E-Y-L-R) derived from Human EGFR.

Formulation: Supplied at 1.0mg/mL in phosphate buffered saline (without Mg²⁺ and Ca²⁺), pH 7.4, 150mM NaCl, 0.02% sodium azide and 50% glycerol.

Synonyms: Receptor tyrosine-protein kinase ErbB-1 ERBB1 kinase EGFR

Accession No.: Swiss-Prot#: P00533 NCBI Gene#: 1956
NCBI Protein#: NP_005219.2

Background: Receptor for EGF, but also for other members of the EGF family, as TGF-alpha, amphiregulin, betacellulin, heparin-binding EGF-like growth factor, GP30 and vaccinia virus growth factor. Is involved in the control of cell growth and differentia

References:

Corbalan-Garcia S, et al. (1996) Mol Cell Biolt; 16(10): 5674-5682
Kanner SB, et al. (1991) Mol Cell Biol; 11(2): 713-720
Wu TT, et al. (1998) Mol Biol Cell; 9(7): 1661-1674
O'Rourke DM, et al. (1997) Proc Natl Acad Sci U S A; 94(7): 3250-3255
Goldstein DJ, et al. (1994) J Virol; 68(7): 4432-4441

Citation:

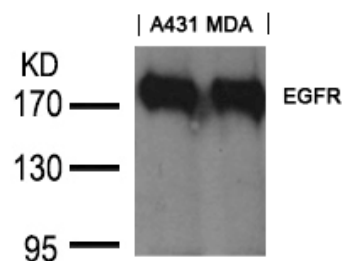
If you publish research using #21551 please [let us know](#).

Related Pathway: Receptors, Kinase/Phosphatases

Note: For western blotting, incubate membrane with diluted antibody in 5% nonfat milk, 1X TBS, 0.1% Tween-20 at 4°C with gentle shaking, overnight.

Recommended Dilutions:

Western blotting 1:500~1:1000



Western blot analysis of extracts from A431 and MDA cells using EGFR (Ab-1197) goat polyclonal antibody #21551.