

#21548

## Met (Ab-1003) Antibody

**Catalog:** #21548-1 50µl **Orders:** [order@signalwayantibody.com](mailto:order@signalwayantibody.com)  
#21548-2 100µl **Support:** [tech@signalwayantibody.com](mailto:tech@signalwayantibody.com)  
**Storage:** Store at -20°C/1 year **Web:** [www.signalwayantibody.com](http://www.signalwayantibody.com)



Application	Species Reactivity	Source	Molecular Wt.
WB IHC	Human Mouse Rat	Rabbit Polyconal Ab	156KD

**Description:** Antibodies were produced by immunizing rabbits with synthetic peptide and KLH conjugates. Antibodies were purified by affinity-chromatography using epitope-specific peptide.

**Specificity:** The antibody detects endogenous level of total Met protein.

**Immunogen:** Peptide sequence around aa. 1001~1005 (V-D-Y-R-A) derived from Human Met.

**Formulation:** Supplied at 1.0mg/mL in phosphate buffered saline (without Mg<sup>2+</sup> and Ca<sup>2+</sup>), pH 7.4, 150mM NaCl, 0.02% sodium azide and 50% glycerol.

**Synonyms:** Scatter factor receptor

**Accession No.:** Swiss-Prot#: P08581      NCBI Gene#: 4233  
NCBI Protein#: NP\_000236.2

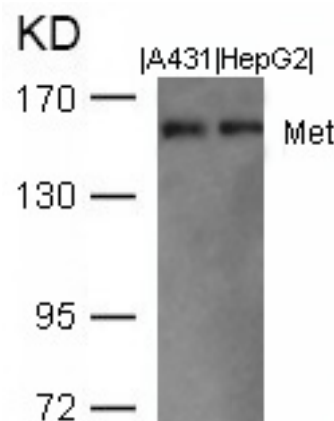
**Background:** Receptor for hepatocyte growth factor and scatter factor. Has a tyrosine-protein kinase activity. Functions in cell proliferation, scattering, morphogenesis and survival.

### References:

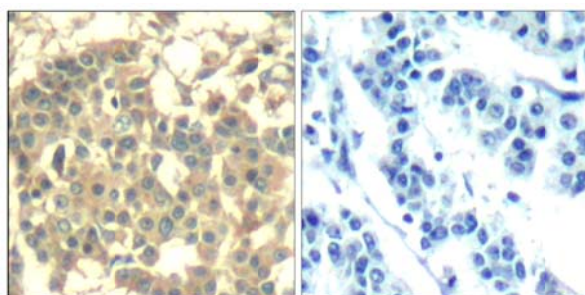
Weidner, K.M. et al. (1993) J. Cell Biol. 121, 145-154.  
Traxler, P. et al. (2001) Med. Res. Rev. 21, 499-512.  
Schaeper, U. et al. (2000) J. Cell Biol. 149, 1419-1432.  
Park, M. et al. (1986) Cell 45, 895-904.

### Recommended Dilutions:

Western blotting      1:500~1:1000  
Immunohistochemistry 1:50~1:100



Western blot analysis of extracts from A431 and HepG2 cells using Met (Ab-1003) Antibody #21548.



Immunohistochemical analysis of paraffin-embedded human breast carcinoma tissue using Met (Ab-1003) Antibody #21548 (left) or the same antibody preincubated with blocking peptide (right).

### Citation:

If you publish research using #21548 please [let us know](#).

**Related Pathway:** Akt, MAPK, Kinase/Phosphatases, Receptors

**Note:** For western blotting, incubate membrane with diluted antibody in 5% nonfat milk, 1X TBS, 0.1% Tween-20 at 4°C with gentle shaking, overnight.