

#21545

## FAK (Ab-576/577) Antibody

**Catalog:** #21545-1 50µl **Orders:** [order@signalwayantibody.com](mailto:order@signalwayantibody.com)  
#21545-2 100µl **Support:** [tech@signalwayantibody.com](mailto:tech@signalwayantibody.com)  
**Storage:** Store at -20°C/1 year **Web:** [www.signalwayantibody.com](http://www.signalwayantibody.com)



Application	Species Reactivity	Source	Molecular Wt.
WB IHC	Human Mouse Rat	Rabbit Polyclonal Ab	125KD

**Description:** Antibodies were produced by immunizing rabbits with synthetic peptide and KLH conjugates. Antibodies were purified by affinity-chromatography using epitope-specific peptide.

**Specificity:** The antibody detects endogenous level of total FAK protein.

**Immunogen:** Peptide sequence around aa.574~578/575~579 (T-Y-Y-K-A) derived from Human FAK.

**Formulation:** Supplied at 1.0mg/mL in phosphate buffered saline (without Mg<sup>2+</sup> and Ca<sup>2+</sup>), pH 7.4, 150mM NaCl, 0.02% sodium azide and 50% glycerol.

**Synonyms:** ?FADK 1 FAK1 PTK2

**Accession No.:** Swiss-Prot#: Q05397 NCBI Gene#: 5747  
NCBI Protein#: NP\_005598.3

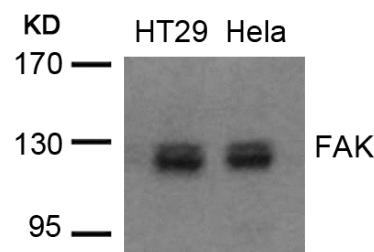
**Background:** Non-receptor protein-tyrosine kinase implicated in signaling pathways involved in cell motility, proliferation and apoptosis. Activated by tyrosine-phosphorylation in response to either integrin clustering induced by cell adhesion or antibody cross-linking, or via G-protein coupled receptor (GPCR) occupancy by ligands such as bombesin or lysophosphatidic acid, or via LDL receptor occupancy. Plays a potential role in oncogenic transformations resulting in increased kinase activity.

### References:

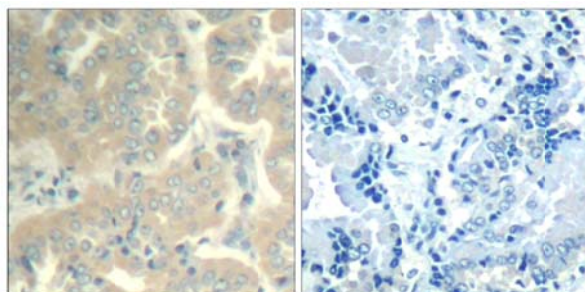
Parsons, J.T. et al. (2000) *Oncogene* 19, 5606-5613.  
Schaller, M.D. et al. (1994) *Mol. Cell. Biol.* 14, 1680-1688.  
Chen, H.C. et al. (1996) *J. Biol. Chem.* 271, 26329-26334.  
Calalb, M.B. et al. (1995) *Mol. Cell. Biol.* 15, 954-963.

### Recommended Dilutions:

Western blotting 1:500~1:1000  
Immunohistochemistry 1:50~1:100



Western blot analysis of extracts from HT29 and HeLa cells using FAK (Ab-576/577) Antibody #21545.



Immunohistochemical analysis of paraffin-embedded human lung carcinoma tissue using FAK (Ab-576/577) Antibody #21545 (left) or the same antibody preincubated with blocking peptide (right).

### Citation:

If you publish research using #21545 please [let us know](#).

**Related Pathway:** Akt, MAPK, Cytoskeletal/Adhesion, Kinase/Phosphatases

**Note:** For western blotting, incubate membrane with diluted antibody in 5% nonfat milk, 1X TBS, 0.1% Tween-20 at 4°C with gentle shaking, overnight.