

#21542

CDK6 (Ab-13) Antibody

Catalog: #21542-1 50µl **Orders:** order@signalwayantibody.com
#21542-2 100µl **Support:** tech@signalwayantibody.com
Storage: Store at -20°C/1 year **Web:** www.signalwayantibody.com



Application	Species Reactivity	Source	Molecular Wt.
IHC IF	Human Mouse	Rabbit Polyconal Ab	36KD

Description: Antibodies were produced by immunizing rabbits with synthetic peptide and KLH conjugates. Antibodies were purified by affinity-chromatography using epitope-specific peptide.

Specificity: The antibody detects endogenous level of total CDK6 protein.

Immunogen: Peptide sequence around aa.11~15 (Q-Q-Y-E-C) derived from Human CDK6.

Formulation: Supplied at 1.0mg/mL in phosphate buffered saline (without Mg²⁺ and Ca²⁺), pH 7.4, 150mM NaCl, 0.02% sodium azide and 50% glycerol.

Synonyms: Serine/threonine-protein kinase PLSTIRE

Accession No.: Swiss-Prot#: Q00534 NCBI Gene#: 1021
NCBI Protein#: NP_001138778.1

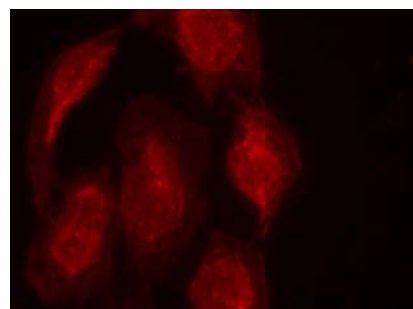
Background: Probably involved in the control of the cell cycle. Interacts with D-type G1 cyclins.

References:

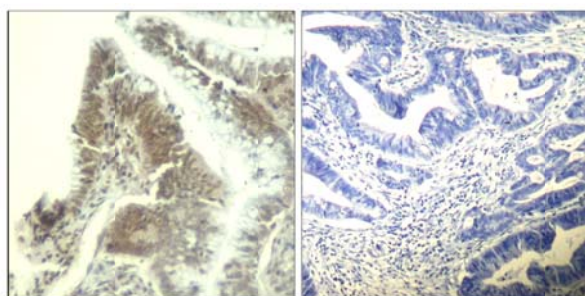
Flores-Rozas, H. et al. (1994) Proc. Natl. Acad. Sci. USA 91, 8655-8659.
Pestell, R.G. et al. (1999) Endocr. Rev. 20, 501-534.
Lukas, J. et al. (1996) Mol. Cell. Biol. 16, 6917-1625.

Recommended Dilutions:

Immunohistochemistry 1:50~1:100
Immunofluorescence 1:100~1:200



Immunofluorescence staining of methanol-fixed HeLa cells using CDK6 (Ab-13) Antibody #21542.



Immunohistochemical analysis of paraffin-embedded human colon carcinoma tissue using CDK6 (Ab-13) Antibody #21542 (left) or the same antibody preincubated with blocking peptide (right).

Citation:

If you publish research using #21542 please [let us know](#).

Related Pathway: Cancer/Apoptosis, CellCycle, Kinase/Phosphatases

Note: For western blotting, incubate membrane with diluted antibody in 5% nonfat milk, 1X TBS, 0.1% Tween-20 at 4°C with gentle shaking, overnight.