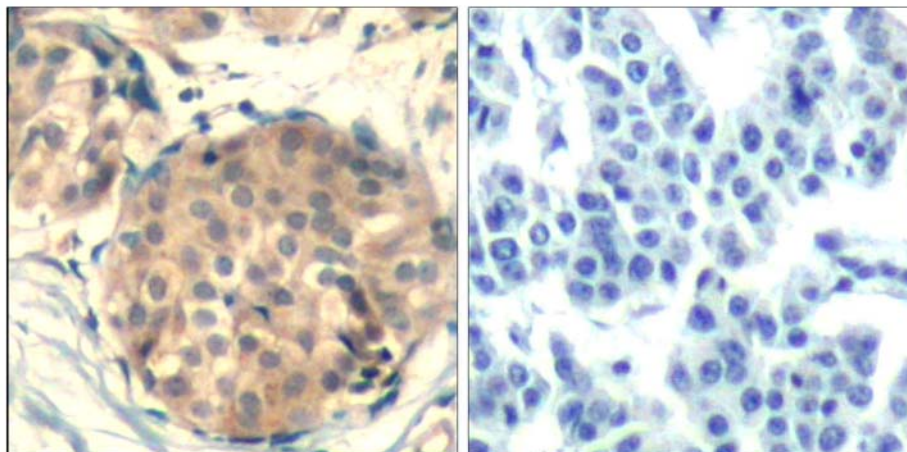


- Catalog Number:** 21539-1, 21539-2  
**Amount:** 50µg/50µl, 100µg/100µl  
**Swiss-Prot No. :** P10721  
**Form of Antibody:** Rabbit IgG in phosphate buffered saline (without Mg<sup>2+</sup> and Ca<sup>2+</sup>), pH 7.4, 150mM NaCl, 0.02% sodium azide and 50% glycerol.  
**Storage/Stability:** Store at -20°C/1 year  
**Immunogen:** The antiserum was produced against synthesized non-phosphopeptide derived from human c-kit around the phosphorylation site of tyrosine 936 (H-I-Y<sup>P</sup>-S-N).  
**Purification:** The antibody was affinity-purified from rabbit antiserum by affinity-chromatography using epitope-specific immunogen.  
**Specificity/Sensitivity:** c-kit (Ab-936) Antibody detects endogenous levels of total c-kit protein.  
**Reactivity:** Human  
**Applications:** IHC: 1:50~1:100  
**References:** Martin, F.H. et al. (1990) *Cell* 63, 203-11.  
Blume-Jensen, P. et al. (2000) *Nat Genet* 24, 157-62.  
Gommerman, J.L. et al. (1997) *J Biol Chem* 272, 30519-25.  
Nocka, K. et al. (1990) *EMBO J* 9, 1805-13.



Peptide

-

+

Immunohistochemical analysis of paraffin-embedded human breast carcinoma tissue using c-kit (Ab-936) Antibody (#21539).