

#21536

STAT2 (Ab-690) Antibody

Catalog: #21536-1 50µl **Orders:** order@signalwayantibody.com
#21536-2 100µl **Support:** tech@signalwayantibody.com
Storage: Store at -20°C/1 year **Web:** www.signalwayantibody.com



Application	Species Reactivity	Source	Molecular Wt.
WB IHC	Human	Rabbit Polyclonal Ab	113KD

Description: Antibodies were produced by immunizing rabbits with synthetic peptide and KLH conjugates. Antibodies were purified by affinity-chromatography using epitope-specific peptide.

Specificity: The antibody detects endogenous level of total STAT2 protein.

Immunogen: Peptide sequence around aa.688~692 (R-K-Y-L-K) derived from Human STAT2.

Formulation: Supplied at 1.0mg/mL in phosphate buffered saline (without Mg²⁺ and Ca²⁺), pH 7.4, 150mM NaCl, 0.02% sodium azide and 50% glycerol.

Synonyms: P113 ISGF-3 STAT113

Accession No.: Swiss-Prot#: P52630 NCBI Gene#: 6773
NCBI Protein#: NP_005410.1

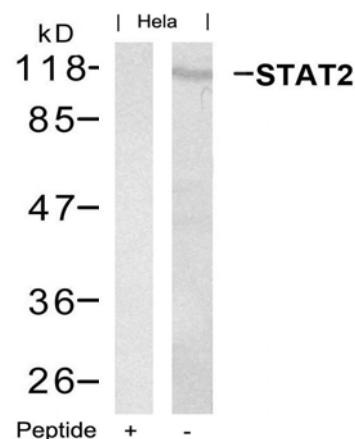
Background: STAT2 encoded by this gene is a member of the STAT protein family. In response to cytokines and growth factors, STAT family members are phosphorylated by the receptor associated kinases, and then form homo- or heterodimers that translocate to the cell nucleus where they act as transcription activators. In response to interferon (IFN), this protein forms a complex with STAT1 and IFN regulatory factor family protein p48 (ISGF3G), in which this protein acts as a transactivator, but lacks the ability to bind DNA directly. Transcription adaptor P300/CBP (EP300/CREBBP) has been shown to interact specifically with this protein, which is thought to be involved in the process of blocking IFN-alpha response by adenovirus.

References:

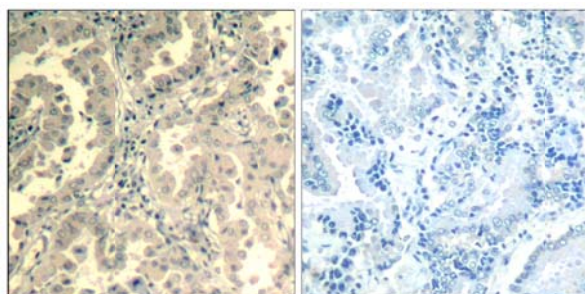
- Fu, X. et al. (1992) *Biochemistry* 89, 7840-7843.
Park, C. et al. (2000) *Immunity* 13, 795-804.
Horvath, C. et al. (1996) *Molecular and Cellular Biology* 16, 6957-6964.
Improta, T. et al. (1994) *Proc. Natl. Acad. Sci. USA* 91, 4776-4780.

Recommended Dilutions:

Western blotting 1:500~1:1000
Immunohistochemistry 1:50~1:100



Western blot analysis of extracts from HeLa cells using STAT2 (Ab-690) Antibody #21536 and the same antibody preincubated with blocking peptide.



Immunohistochemical analysis of paraffin-embedded human lung carcinoma tissue using STAT2 (Ab-690) Antibody #21536 (left) or the same antibody preincubated with blocking peptide (right).

Citation:

If you publish research using #21536 please [let us know](#).

Related Pathway: Jak/Stat, Cancer/Apoptosis, MAPK

Note: For western blotting, incubate membrane with diluted antibody in 5% nonfat milk, 1X TBS, 0.1% Tween-20 at 4°C with gentle shaking, overnight.