

#21529

## CDC2 (Ab-19) Antibody

**Catalog:** #21529-1      50µl      **Orders:** [order@signalwayantibody.com](mailto:order@signalwayantibody.com)  
#21529-2      100µl      **Support:** [tech@signalwayantibody.com](mailto:tech@signalwayantibody.com)  
**Storage:** Store at -20°C/1 year      **Web:** [www.signalwayantibody.com](http://www.signalwayantibody.com)



Application	Species Reactivity	Source	Molecular Wt.
IHC	Human Rat	Rabbit Polyconal Ab	34KD

**Description:** Antibodies were produced by immunizing rabbits with synthetic peptide and KLH conjugates. Antibodies were purified by affinity-chromatography using epitope-specific peptide.

### Recommended Dilutions:

Immunohistochemistry 1:50~1:100

**Specificity:** The antibody detects endogenous level of total CDC2 protein.

**Immunogen:** Peptide sequence around aa.17~21 (V-V-Y-K-G) derived from Human CDC2.

**Formulation:** Supplied at 1.0mg/mL in phosphate buffered saline (without Mg<sup>2+</sup> and Ca<sup>2+</sup>), pH 7.4, 150mM NaCl, 0.02% sodium azide and 50% glycerol.

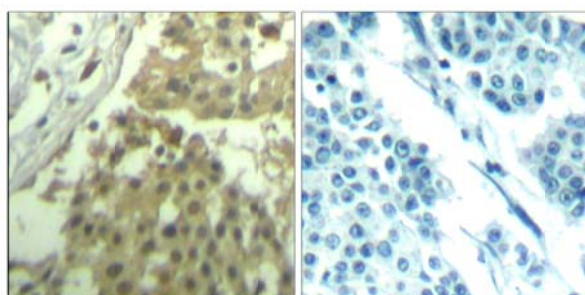
**Synonyms:** CDC28    CDC2A    CDK1    Cyclin-dependent kinase 1

**Accession No.:** Swiss-Prot#: P06493      NCBI Gene#: 983  
NCBI Protein#: NP\_001163877.1

**Background:** Plays a key role in the control of the eukaryotic cell cycle. It is required in higher cells for entry into S-phase and mitosis. p34 is a component of the kinase complex that phosphorylates the repetitive C-terminus of RNA polymerase II.

### References:

Hunter, T. (1995) Cell 80, 225-236.  
Wells, N.J. et al. (1999) J. Cell. Sci. 112, 3361-3371.  
McGowan, C.H. and Russell, P. (1993) EMBO J. 12, 75-85.



Immunohistochemical analysis of paraffin-embedded human breast carcinoma tissue using CDC2 (Ab-19) Antibody #21529 (left) or the same antibody preincubated with blocking peptide (right).

### Citation:

If you publish research using #21529 please [let us know](#).

**Related Pathway:** Cancer/Apoptosis, CellCycle, Cytoskeletal/Adhesion, Kinase/Phosphatases

**Note:** For western blotting, incubate membrane with diluted antibody in 5% nonfat milk, 1X TBS, 0.1% Tween-20 at 4°C with gentle shaking, overnight.