

#21524

PLC- γ 2 (Ab-1217) Antibody

Catalog: #21524-1 50 μ l **Orders:** order@signalwayantibody.com
#21524-2 100 μ l **Support:** tech@signalwayantibody.com
Storage: Store at -20°C/1 year **Web:** www.signalwayantibody.com



Application	Species Reactivity	Source	Molecular Wt.
IHC IF	Human Mouse Rat	Rabbit Polyconal Ab	150KD

Description: Antibodies were produced by immunizing rabbits with synthetic peptide and KLH conjugates. Antibodies were purified by affinity-chromatography using epitope-specific peptide.

Specificity: The antibody detects endogenous level of total PLC- γ 2 protein.

Immunogen: Peptide sequence around aa.1215~1219 (F-L-Y-D-T) derived from Human PLC γ 2.

Formulation: Supplied at 1.0mg/mL in phosphate buffered saline (without Mg²⁺ and Ca²⁺), pH 7.4, 150mM NaCl, 0.02% sodium azide and 50% glycerol.

Synonyms: PLC-IV PLC-gamma2 Phospholipase C-gamma-2

Accession No.: Swiss-Prot#: P16885 NCBI Gene#: 5336
NCBI Protein#: NP_002652.2

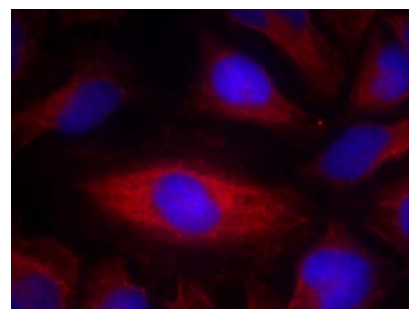
Background: The production of the second messenger molecules diacylglycerol (DAG) and inositol 1,4,5-trisphosphate (IP₃) is mediated by activated phosphatidylinositol-specific phospholipase C enzymes. It is a crucial enzyme in transmembrane signaling.

References:

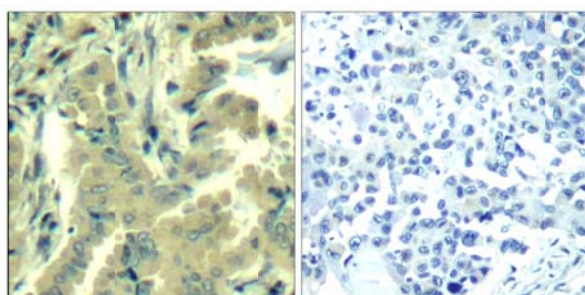
Singer, W. D. et al. (1997) Annu. Rev. Biochem. 66, 475-509.
Smrcka, A. V. et al. (1991) Science 251, 804-807.
Yue, C. et al. (2000) J. Biol. Chem. 275, 30220-30225.
Watanabe, D. et al. (2001) J. Biol. Chem. 276, 38595-38601.

Recommended Dilutions:

Immunohistochemistry 1:50~1:100
Immunofluorescence 1:100~1:200



Immunofluorescence staining of methanol-fixed HeLa cells using PLC- γ 2 (Ab-1217) Antibody #21524.



Immunohistochemical analysis of paraffin-embedded human lung carcinoma tissue using PLC- γ 2 (Ab-1217) Antibody #21524 (left) or the same antibody preincubated with blocking peptide (right).

Citation:

If you publish research using #21524 please [let us know](#).

Related Pathway: NF-kappa B, Kinase/Phosphatases, Neuroscience

Note: For western blotting, incubate membrane with diluted antibody in 5% nonfat milk, 1X TBS, 0.1% Tween-20 at 4°C with gentle shaking, overnight.