

#21523

PLC- γ 1 (Ab-771) Antibody

Catalog: #21523-1 50 μ l **Orders:** order@signalwayantibody.com
#21523-2 100 μ l **Support:** tech@signalwayantibody.com
Storage: Store at -20°C/1 year **Web:** www.signalwayantibody.com



Application	Species Reactivity	Source	Molecular Wt.
WB IHC	Human Mouse Rat	Rabbit Polyconal Ab	155KD

Description: Antibodies were produced by immunizing rabbits with synthetic peptide and KLH conjugates. Antibodies were purified by affinity-chromatography using epitope-specific peptide.

Specificity: The antibody detects endogenous level of total PLC- γ 1 protein.

Immunogen: Peptide sequence around aa. 769~773 (P-D-Y-G-A) derived from Human PLC- γ 1.

Formulation: Supplied at 1.0mg/mL in phosphate buffered saline (without Mg²⁺ and Ca²⁺), pH 7.4, 150mM NaCl, 0.02% sodium azide and 50% glycerol.

Synonyms: Phosphoinositide phospholipase C Phospholipase C-gamma-1

Accession No.: Swiss-Prot#: P19174 NCBI Gene#: 5335
NCBI Protein#: NP_002651.2

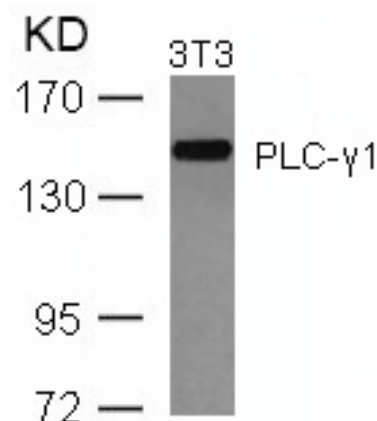
Background: PLC-gamma is a major substrate for heparin-binding growth factor 1 (acidic fibroblast growth factor)-activated tyrosine kinase.

References:

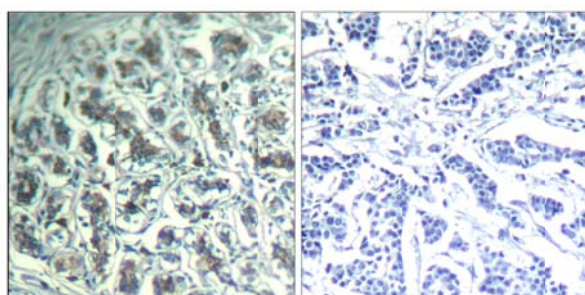
Singer, W. D. et al. (1997) Annu. Rev. Biochem. 66, 475-509.
Yue, C. et al. (1998) J. Biol. Chem. 273, 18023-18027.
Wang, Z. et al. (1998) Mol. Cell. Biol. 18, 590-597.
Kim, H. K. et al. (1991) Cell 65, 435-441.
Margolis, B. et al. (1989) Cell 57, 1101-1107.

Recommended Dilutions:

Western blotting 1:500~1:1000
Immunohistochemistry 1:50~1:100



Western blot analysis of extracts from 3T3 cells using PLC- γ 1 (Ab-771) Antibody #21523.



Immunohistochemical analysis of paraffin-embedded human breast carcinoma tissue using PLC- γ 1 (Ab-771) Antibody #21523 (left) or the same antibody preincubated with blocking peptide (right).

Citation:

If you publish research using #21523 please [let us know](#).

Related Pathway: NF-kappa B, Kinase/Phosphatases, Neuroscience

Note: For western blotting, incubate membrane with diluted antibody in 5% nonfat milk, 1X TBS, 0.1% Tween-20 at 4°C with gentle shaking, overnight.