

#21522

Jak2 (Ab-570) Antibody

Catalog: #21522-1 50µl **Orders:** order@signalwayantibody.com
#21522-2 100µl **Support:** tech@signalwayantibody.com
Storage: Store at -20°C/1 year **Web:** www.signalwayantibody.com



Application	Species Reactivity	Source	Molecular Wt.
IHC	Human Rat	Rabbit Polyconal Ab	125KD

Description: Antibodies were produced by immunizing rabbits with synthetic peptide and KLH conjugates. Antibodies were purified by affinity-chromatography using epitope-specific peptide.

Recommended Dilutions:

Immunohistochemistry 1:50~1:100

Specificity: The antibody detects endogenous level of total Jak2 protein.

Immunogen: Peptide sequence around aa.568~572 (G-D-Y-G-Q) derived from Human JAK2.

Formulation: Supplied at 1.0mg/mL in phosphate buffered saline (without Mg²⁺ and Ca²⁺), pH 7.4, 150mM NaCl, 0.02% sodium azide and 50% glycerol.

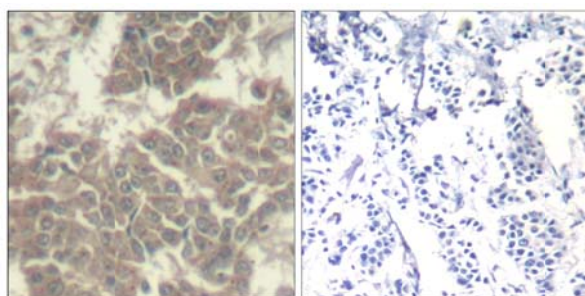
Synonyms: JAK-2 Janus kinase 2 kinase Jak2

Accession No.: Swiss-Prot#: O60674 NCBI Gene#: 3717
NCBI Protein#: NP_004963.1

Background: Plays a role in leptin signaling and control of body weight

References:

Zhu, T. et al. (1998) J. Biol. Chem. 273, 10682-10689.
Argetsinger, L.S. et al. (1995) J. Biol. Chem. 270, 14685-14692.
VanderKuur, J. et al. (1995) J. Biol. Chem. 270, 7587-7593.
Darnell, J.E. (1997) Science 277, 1630-1635.
Leonard, W.J. and O'Shea, J.J. (1998) Annu. Rev. Immunol. 16, 293-322.



Immunohistochemical analysis of paraffin-embedded human breast carcinoma tissue using Jak2 (Ab-570) Antibody #21522 (left) or the same antibody preincubated with blocking peptide (right).

Citation:

If you publish research using #21522 please [let us know](#).

Related Pathway: Jak/Stat, Cancer/Apoptosis, Akt, Kinases/Phosphatases

Note: For western blotting, incubate membrane with diluted antibody in 5% nonfat milk, 1X TBS, 0.1% Tween-20 at 4°C with gentle shaking, overnight.