

#21520

## $\beta$ -Catenin (Ab-654) Antibody

**Catalog:** #21520-1 50 $\mu$ l **Orders:** [order@signalwayantibody.com](mailto:order@signalwayantibody.com)  
#21520-2 100 $\mu$ l **Support:** [tech@signalwayantibody.com](mailto:tech@signalwayantibody.com)  
**Storage:** Store at -20°C/1 year **Web:** [www.signalwayantibody.com](http://www.signalwayantibody.com)



Application	Species Reactivity	Source	Molecular Wt.
WB	Human Mouse Rat	Rabbit Polyconal Ab	92KD

**Description:** Antibodies were produced by immunizing rabbits with synthetic peptide and KLH conjugates. Antibodies were purified by affinity-chromatography using epitope-specific peptide.

**Specificity:** The antibody detects endogenous level of total  $\beta$ -Catenin protein.

**Immunogen:** Peptide sequence around aa.652~656 (A-T-Y-A-A) derived from Human  $\beta$ -Catenin.

**Formulation:** Supplied at 1.0mg/mL in phosphate buffered saline (without Mg<sup>2+</sup> and Ca<sup>2+</sup>), pH 7.4, 150mM NaCl, 0.02% sodium azide and 50% glycerol.

**Synonyms:** CTNNB1 CATNB CTNB1 CTNNB

**Accession No.:** Swiss-Prot#: P35222 NCBI Gene#: 1499  
NCBI Protein#: NP\_001091679.1

**Background:** Involved in the regulation of cell adhesion and in signal transduction through the Wnt pathway.

### References:

Provost E, et al. (2003) J Biol Chem 278(34): 31781-9.  
Sakanaka C, et al. (2003) J Biochem (Tokyo); 132(5): 697-703.  
Amit S, et al. (2002) Genes Dev; 16(9): 1066-76.  
Liu C, et al. (2002) Cell; 108(6): 837-47.  
Provost E, et al. (2005) Oncogene; 24(16): 2667-76.

### Citation:

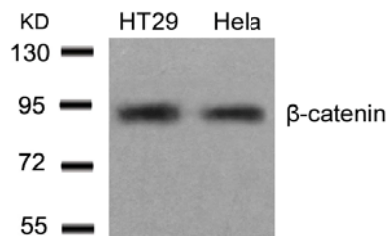
If you publish research using #21520 please [let us know](#).

**Related Pathway:** Wnt/beta-catenin

**Note:** For western blotting, incubate membrane with diluted antibody in 5% nonfat milk, 1X TBS, 0.1% Tween-20 at 4°C with gentle shaking, overnight.

### Recommended Dilutions:

Western blotting 1:500~1:1000



Western blot analysis of extracts from HT29 and HeLa cells using  $\beta$ -Catenin (Ab-654) Antibody #21520.