

#21517

HDAC4/HDAC5/HDAC9

(Ab-246/259/220)



Catalog: #21517-1 50µl Orders: order@signalwayantibody.com

#21517-2 100µl Support: tech@signalwayantibody.com

Storage: Store at -20°C/1 year Web: www.signalwayantibody.com

Application	Species Reactivity	Source	Molecular Wt.
WB IHC IF	Human Mouse Rat	Rabbit Polyclonal Ab	140 124KD

Description: Antibodies were produced by immunizing rabbits with synthetic peptide and KLH conjugates. Antibodies were purified by affinity-chromatography using epitope-specific peptide.

Specificity: The antibody detects endogenous level of total HDAC4/HDAC5/HDAC9 protein.

Immunogen: Peptide sequence around aa.244~248/257~261/218~222 (T-A-S-E-P) derived from Human HDAC4/HDAC5/HDAC9.

Formulation: Supplied at 1.0mg/mL in phosphate buffered saline (without Mg²⁺ and Ca²⁺), pH 7.4, 150mM NaCl, 0.02% sodium azide and 50% glycerol.

Synonyms: HD4/HD5/HD9

Accession No.: Swiss-Prot#: P56524 Q9UQL6 Q9UKV0 NCBI
Gene#: 9759 10014 9734
NCBI Protein#: NP_006028.2 NP_001015053.1
NP_055522.1

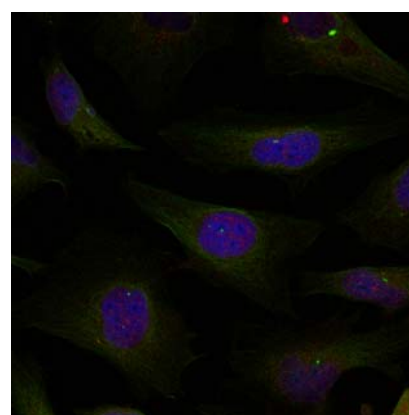
Background: Responsible for the deacetylation of lysine residues on the N-terminal part of the core histones (H2A, H2B, H3 and H4). Histone deacetylation gives a tag for epigenetic repression and plays an important role in transcriptional regulation, cell cycle progression and developmental events. Histone deacetylases act via the formation of large multiprotein complexes. Involved in muscle maturation via its interaction with the myocyte enhancer factors such as MEF2A, MEF2C and MEF2D.

References:

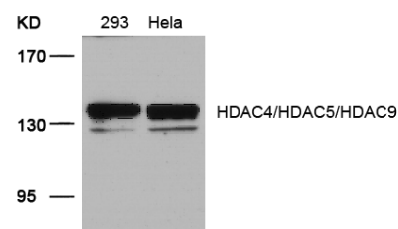
Cress, W.D. and Seto, E. (2000) J Cell Physiol 184, 1-16.
Vigushin, D.M. and Coombes, R.C. (2004) Curr. Cancer Drug Targets 4, 205-218.
Marmorstein, R. (2001) Cell Mol Life Sci 58, 693-703.
Thiagalingam, S. et al. (2003) Ann. N.Y. Acad. Sci. 983, 84-100.

Recommended Dilutions:

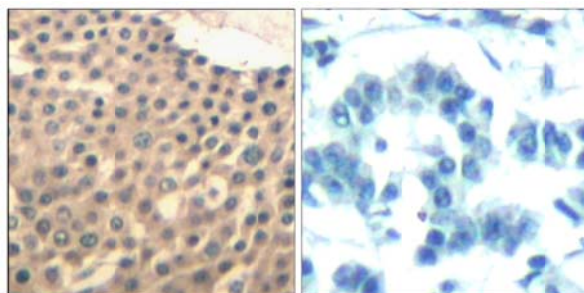
Western blotting 1:500~1:1000
Immunohistochemistry 1:50~1:100
Immunofluorescence 1:100~1:200



Immunofluorescence staining of methanol-fixed HeLa cells using HDAC4/HDAC5/HDAC9 (Ab-246/259/220) Antibody #21517.



Western blot analysis of extracts from 293 and HeLa cells using HDAC4/HDAC5/HDAC9 (Ab-246/259/220) Antibody #21517.



Immunohistochemical analysis of paraffin-embedded human lung carcinoma tissue using HDAC4/HDAC5/HDAC9 (Ab-246/259/220) Antibody #21517 (left) or the same antibody preincubated with blocking peptide (right).

Citation:

If you publish research using #21517 please [let us know](#).

Related Pathway: Cell Cycle, Chromatin/Transcription, Wnt/beta-catenin, NF-kappa B

Note: For western blotting, incubate membrane with diluted antibody in 5% nonfat milk, 1X TBS, 0.1% Tween-20 at 4°C with gentle shaking, overnight.

This product is for in vitro research use only and is not intended for use in humans or animals.