

#21513

## eIF4B (Ab-422) Antibody

**Catalog:** #21513-1 50µl **Orders:** [order@signalwayantibody.com](mailto:order@signalwayantibody.com)  
#21513-2 100µl **Support:** [tech@signalwayantibody.com](mailto:tech@signalwayantibody.com)  
**Storage:** Store at -20°C/1 year **Web:** [www.signalwayantibody.com](http://www.signalwayantibody.com)



Application	Species Reactivity	Source	Molecular Wt.
WB IHC	Human	Rabbit Polyconal Ab	80KD

**Description:** Antibodies were produced by immunizing rabbits with synthetic peptide and KLH conjugates. Antibodies were purified by affinity-chromatography using epitope-specific peptide.

**Specificity:** The antibody detects endogenous level of total eIF4B protein.

**Immunogen:** Peptide sequence around aa.420~424 (T-G-S-E-S) derived from Human eIF4B.

**Formulation:** Supplied at 1.0mg/mL in phosphate buffered saline (without Mg<sup>2+</sup> and Ca<sup>2+</sup>), pH 7.4, 150mM NaCl, 0.02% sodium azide and 50% glycerol.

**Synonyms:**

**Accession No.:** Swiss-Prot#: P23588      NCBI Gene#: 1975  
NCBI Protein#: NP\_001408.2

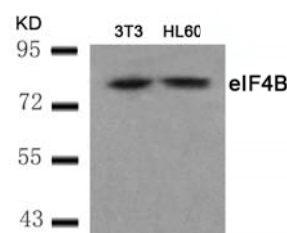
**Background:** Required for the binding of mRNA to ribosomes. Functions in close association with EIF4-F and EIF4-A. Binds near the 5'-terminal cap of mRNA in presence of EIF-4F and ATP. Promotes the ATPase activity and the ATP-dependent RNA unwinding activity of both EIF4-A and EIF4-F.

### References:

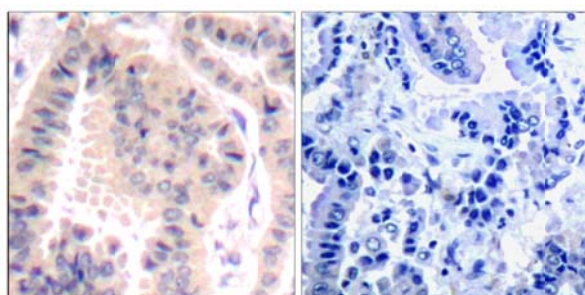
Gingras, A.C. et al. (2001) Genes Dev. 15, 807-826.  
Duncan, R. and Hershey, J.W. (1985) J. Biol. Chem. 260, 5493-5497.  
Duncan, R.F. and Hershey, J.W. (1989) J. Cell Biol. 109, 1467-1481.

### Recommended Dilutions:

Western blotting      1:500~1:1000  
Immunohistochemistry 1:50~1:100



Western blot analysis of extracts from 3T3 and HL60 cells using eIF4B (Ab-422) Antibody #21513.



Immunohistochemical analysis of paraffin-embedded human lung carcinoma tissue using eIF4B (Ab-422) Antibody #21513 (left) or the same antibody preincubated with blocking peptide (right).

### Citation:

If you publish research using #21513 please [let us know](#).

**Related Pathway:** Akt, Translation

**Note:** For western blotting, incubate membrane with diluted antibody in 5% nonfat milk, 1X TBS, 0.1% Tween-20 at 4°C with gentle shaking, overnight.