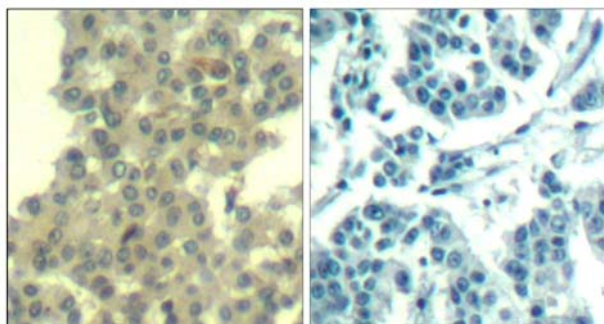
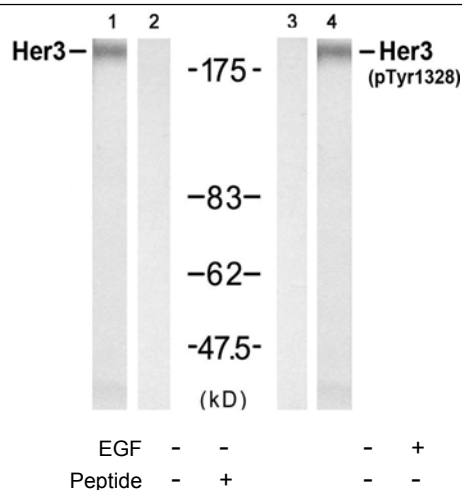


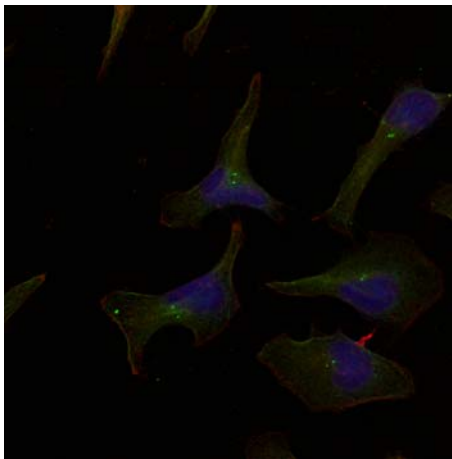
- Catalog Number:** 21510-1, 21510-2
- Amount:** 50µg/50µl, 100µg/100µl
- Form of Antibody:** Rabbit IgG in phosphate buffered saline (without Mg²⁺ and Ca²⁺), pH 7.4, 150mM NaCl, 0.02% sodium azide and 50% glycerol.
- Storage/Stability:** Store at -20°C/1 year
- Immunogen:** The antiserum was produced against synthesized non-phosphopeptide derived from human Her3/ErbB3 around the phosphorylation site of tyrosine 1328 (P-D-Y^P-W-H).
- Purification:** The antibody was affinity-purified from rabbit antiserum by affinity-chromatography using epitope-specific immunogen.
- Specificity/Sensitivity** Her3/ErbB3 (Ab-1328) Antibody detects endogenous levels of total Her3/ErbB3 protein.
- Reactivity:** Human, Mouse, Rat
- Applications:** WB: 1:500~1:1000 IHC:1:50~1:100 IF:1:100~1:200
- Swiss-Prot No. :** P21860
- References:** Holbro, T. et al. (2003) *Proc. Natl. Acad. Sci. USA* 100, 8933-8938.
 Kobayashi, M. et al. (2003) *Oncogene* 22, 1294-1301.
 Kim, H.H. et al. (1994) *J. Biol. Chem.* 269, 24747-24755.
 Yarden, Y. and Sliwkowski, M.X. (2001) *Nature Rev. Mol. Cell. Biol.* 2, 127-137.



Peptide - +
 Immunohistochemical analysis of paraffin-embedded human breast carcinoma tissue using Her3/ErbB3 (Ab-1328) Antibody (#21510).



Western blot analysis of extracts from HUVEC cell using Her3/ErbB3 (Ab-1328) Antibody (#21510, Lane 1 and 2) and Her3/ErbB3 (phospho-Tyr1328) Antibody (#11510, Lane 3 and 4).



Immunofluorescence staining of methanol-fixed HeLa cells using Her3/ErbB3 (Ab-1328) Antibody (#21510, Red).