

#21509

Her3/ErbB3 (Ab-1289) Antibody



Catalog: #21509-1 50µl **Orders:** order@signalwayantibody.com
#21509-2 100µl **Support:** tech@signalwayantibody.com
Storage: Store at -20°C/1 year **Web:** www.signalwayantibody.com

Application	Species Reactivity	Source	Molecular Wt.
IF	Human	Rabbit Polyconal Ab	185KD

Description: Antibodies were produced by immunizing rabbits with synthetic peptide and KLH conjugates. Antibodies were purified by affinity-chromatography using epitope-specific peptide.

Specificity: The antibody detects endogenous level of total Her3/ErbB3 protein.

Immunogen: Peptide sequence around aa.1287~1291 (Q-G-Y-E-E) derived from Human Her3/ErbB3.

Formulation: Supplied at 1.0mg/mL in phosphate buffered saline (without Mg²⁺ and Ca²⁺), pH 7.4, 150mM NaCl, 0.02% sodium azide and 50% glycerol.

Synonyms: Tyrosine kinase-type cell surface receptor HER3

Accession No.: Swiss-Prot#: P21860 NCBI Gene#: 2065
NCBI Protein#: NP_001005915.1

Background: Binds and is activated by neuregulins and NTAK.

References:

Yarden, Y. and Sliwkowski, M.X. (2001) Nature Rev. Mol. Cell. Biol. 2, 127-137.
Guy, P.M. et al. (1994) Proc. Natl. Acad. Sci. USA 91, 8132-8136.
Songyang, Z. et al. (1993) Cell 72, 767-778.
Kim, H.H. et al. (1994) J. Biol. Chem. 269, 24747-24755.

Citation:

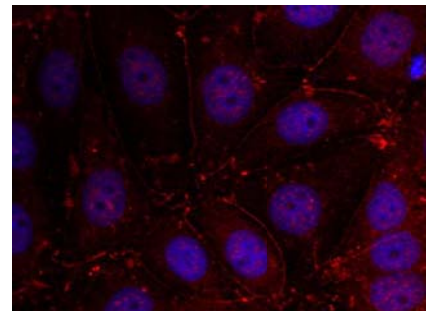
If you publish research using #21509 please [let us know](#).

Related Pathway: Receptors, Kinases/Phosphatases

Note: For western blotting, incubate membrane with diluted antibody in 5% nonfat milk, 1X TBS, 0.1% Tween-20 at 4°C with gentle shaking, overnight.

Recommended Dilutions:

Immunofluorescence 1:100~1:200



Immunofluorescence staining of methanol-fixed MCF cells using Her3/ErbB3 (Ab-1289) Antibody #21509.