

#21508

PI3K P85 $\alpha/\gamma/\beta$ (Ab-467/199/464) Antibody



Catalog: #21508-1 50 μ l **Orders:** order@signalwayantibody.com
#21508-2 100 μ l **Support:** tech@signalwayantibody.com
Storage: Store at -20°C/1 year **Web:** www.signalwayantibody.com

Application	Species Reactivity	Source	Molecular Wt.
IHC	Human Mouse Rat	Rabbit Polyconal Ab	85KD

Description: Antibodies were produced by immunizing rabbits with synthetic peptide and KLH conjugates. Antibodies were purified by affinity-chromatography using epitope-specific peptide.

Recommended Dilutions:

Immunohistochemistry 1:50~1:100

Specificity: The antibody detects endogenous level of total PI3K P85 $\alpha/\gamma/\beta$ protein.

Immunogen: Peptide sequence around aa.465~469/197~201/462~466 (L-Y-E-E-Y) derived from Human PI3K P85.

Formulation: Supplied at 1.0mg/mL in phosphate buffered saline (without Mg²⁺ and Ca²⁺), pH 7.4, 150mM NaCl, 0.02% sodium azide and 50% glycerol.

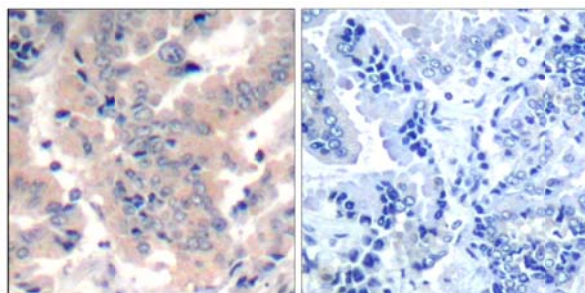
Synonyms:

Accession No.: Swiss-Prot#: P27986 Q92569 O00459 NCBI
Gene#: 5295 8503 5296
NCBI Protein#: NP_852556.2 NP_001107644.1 NP_005018.1

Background: PI3K binds to activated (phosphorylated) protein-Tyr kinases, through its SH2 domain, and acts as an adapter, mediating the association of the p110 catalytic unit to the plasma membrane. Necessary for the insulin-stimulated increase in glucose uptake and glycogen synthesis in insulin-sensitive tissues.

References:

Stoyanov, B. et al. (1995) Science 269, 690-3.
Simpson, L. and Parsons, R. (2001) Exp Cell Res 264, 29-41.
Neri, L.M. et al. (2002) Biochim Biophys Acta 1584, 73-80.



Immunohistochemical analysis of paraffin-embedded human lung carcinoma tissue using PI3K P85 $\alpha/\gamma/\beta$ (Ab-467/199/464) Antibody #21508 (left) or the same antibody preincubated with blocking peptide (right).

Citation:

If you publish research using #21508 please [let us know](#).

Related Pathway: Akt

Note: For western blotting, incubate membrane with diluted antibody in 5% nonfat milk, 1X TBS, 0.1% Tween-20 at 4°C with gentle shaking, overnight.