

#21507

cofilin1/cofilin2 (Ab-88) Antibody

Catalog: #21507-1 50µl **Orders:** order@signalwayantibody.com
#21507-2 100µl **Support:** tech@signalwayantibody.com
Storage: Store at -20°C/1 year **Web:** www.signalwayantibody.com



Application	Species Reactivity	Source	Molecular Wt.
WB IHC IF	Human Mouse	Rabbit Polyclonal Ab	19KD

Description: Antibodies were produced by immunizing rabbits with synthetic peptide and KLH conjugates. Antibodies were purified by affinity-chromatography using epitope-specific peptide.

Specificity: The antibody detects endogenous level of total cofilin1/cofilin2 protein.

Immunogen: Peptide sequence around aa. 86~90 (A-T-Y-E-T) derived from Human cofilin1/cofilin2.

Formulation: Supplied at 1.0mg/mL in phosphate buffered saline (without Mg²⁺ and Ca²⁺), pH 7.4, 150mM NaCl, 0.02% sodium azide and 50% glycerol.

Synonyms: Cofilin non-muscle isoform
18 kDa phosphoprotein

Accession No.: Swiss-Prot#: P23528 Q9Y281 /1073
NCBI Gene#: 1072
NCBI Protein#: NP_005498.1 NP_068733.1

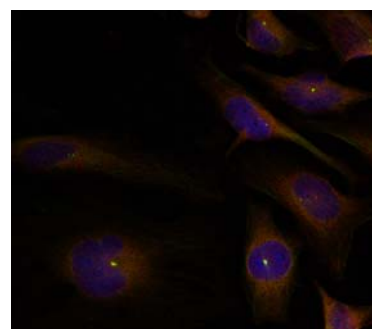
Background: Controls reversibly actin polymerization and depolymerization in a pH-sensitive manner. It has the ability to bind G- and F-actin in a 1:1 ratio of cofilin to actin. It is the major component of intranuclear and cytoplasmic actin rods.

References:

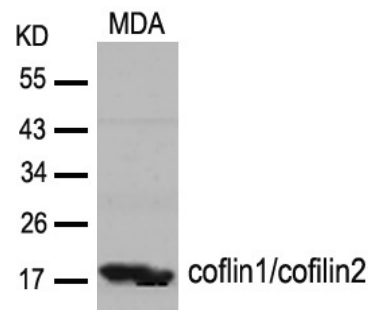
Carrier, M. et al. (1999) J. Biol. Chem. 274, 33827-33830.
Arber, S. et al. (1998) Nature 393, 805-809.
Yang, N. et al. (1998) Nature 393, 809-812.

Recommended Dilutions:

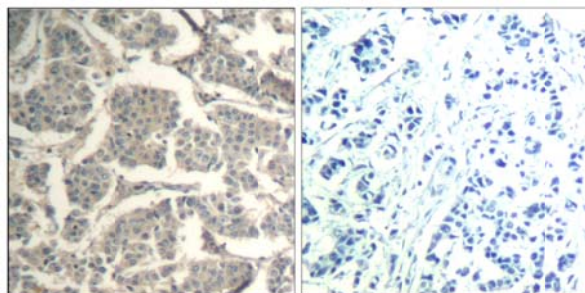
Western blotting 1:500~1:1000
Immunohistochemistry 1:50~1:100
Immunofluorescence 1:100~1:200



Immunofluorescence staining of methanol-fixed HeLa cells using cofilin1/cofilin2 (Ab-88) Antibody #21507.



Western blot analysis of extracts from MDA cells using cofilin1/cofilin2 (Ab-88) Antibody #21507.



Immunohistochemical analysis of paraffin-embedded human breast carcinoma tissue using cofilin1/cofilin2 (Ab-88) Antibody #21507 (left) or the same antibody preincubated with blocking peptide (right).

Citation:

If you publish research using #21507 please [let us know](#).

Related Pathway: Cytoskeletal/Adhesion

Note: For western blotting, incubate membrane with diluted antibody in 5% nonfat milk, 1X TBS, 0.1% Tween-20 at 4°C with gentle shaking, overnight.

This product is for in vitro research use only and is not intended for use in humans or animals.