

#21505

ATR (Ab-428) Antibody

Catalog: #21505-1 50µl **Orders:** order@signalwayantibody.com
#21505-2 100µl **Support:** tech@signalwayantibody.com
Storage: Store at -20°C/1 year **Web:** www.signalwayantibody.com



Application	Species Reactivity	Source	Molecular Wt.
IHC	Human	Rabbit Polyconal Ab	250KD

Description: Antibodies were produced by immunizing rabbits with synthetic peptide and KLH conjugates. Antibodies were purified by affinity-chromatography using epitope-specific peptide.

Recommended Dilutions:

Immunohistochemistry 1:50~1:100

Specificity: The antibody detects endogenous level of total ATR protein.

Immunogen: Peptide sequence around aa.426~430 (G-I-S-P-K) derived from Human ATR.

Formulation: Supplied at 1.0mg/mL in phosphate buffered saline (without Mg²⁺ and Ca²⁺), pH 7.4, 150mM NaCl, 0.02% sodium azide and 50% glycerol.

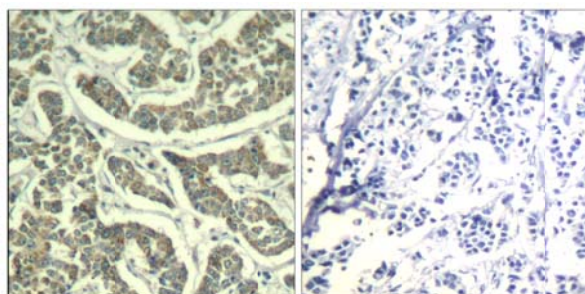
Synonyms: FRP1 MEC1 SCKL SCKL1

Accession No.: Swiss-Prot#: Q13535 NCBI Gene#: 545
NCBI Protein#: NP_001175.2

Background: ATR encoded by this gene belongs the PI3/PI4-kinase family, and is most closely related to ATM, a protein kinase encoded by the gene mutated in ataxia telangiectasia. This protein and ATM share similarity with Schizosaccharomyces pombe rad3, a cell cycle checkpoint gene required for cell cycle arrest and DNA damage repair in response to DNA damage. This kinase has been shown to phosphorylate checkpoint kinase CHK1, checkpoint proteins RAD17, and RAD9, as well as tumor suppressor protein BRCA1. Mutations of this gene are associated with Seckel syndrome. An alternatively spliced transcript variant of this gene has been reported, however, its full length nature is not known. Transcript variants utilizing alternative polyA sites exist.

References:

Zhou, X.Z. et al. (1999) Cell Mol. Life Sci. 56, 788-806.
Pinna, L.A. and Ruzzene, M. (1996) Biochim. Biophys. Acta 1314, 191-225.
Kastan, M.B. and Lim, D.S. (2000) Nat. Rev. Mol. Cell Biol. 1, 179-186.
Shechter, D. et al. (2004) DNA Repair (Amst) 3, 901-908.



Immunohistochemical analysis of paraffin-embedded human breast carcinoma tissue using ATR (Ab-428) Antibody #21505 (left) or the same antibody preincubated with blocking peptide (right).

Citation:

If you publish research using #21505 please [let us know](#).

Related Pathway: DNA damage/repair

Note: For western blotting, incubate membrane with diluted antibody in 5% nonfat milk, 1X TBS, 0.1% Tween-20 at 4°C with gentle shaking, overnight.