

#21422

Caspase 9 Antibody

Catalog: #21422-1 50µl

Orders: order@signalwayantibody.com

#21422-2 100µl

Support: tech@signalwayantibody.com

Storage: Store at -20°C/1 year

Web: www.signalwayantibody.com



Application	Species Reactivity	Source	Molecular Wt.
WB	Human	Rabbit Polyconal Ab	47 37 35KD

Description: Antibodies were produced by immunizing rabbits with synthetic peptide and KLH conjugates. Antibodies were purified by affinity-chromatography using epitope-specific peptide.

Recommended Dilutions:

Western blotting 1:1000

Specificity: The antibody detects endogenous level of total Caspase 9 protein.

Immunogen: Peptide sequence around aa.301~305 (T-S-P-E-D) derived from Caspase 9

Formulation: Supplied at 1.0mg/mL in phosphate buffered saline (without Mg²⁺ and Ca²⁺), pH 7.4, 150mM NaCl, 0.02% sodium azide and 50% glycerol.

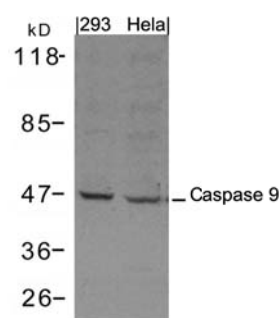
Synonyms: ICE-like apoptotic protease 6

Accession No.: Swiss-Prot#:P55211

NCBI Gene#: 842

NCBI Protein#: NP_001220.2

Background: Involved in the activation cascade of caspases responsible for apoptosis execution. Binding of caspase-9 to Apaf-1 leads to activation of the protease which then cleaves and activates caspase-3. Proteolytically cleaves poly(ADP-ribose) polymerase (PARP). Isoform 2 lacks activity is an dominant-negative inhibitor of caspase-9.



Western blot analysis of extracts from 293 and HeLa cells using Caspase 9 Antibody #21422.

References:

Zou, H. et al. (1999) J. Biol. Chem. 274, 11549-11556.

Deveraux, Q. L. et al. (1998) EMBO J. 17, 2215-2223.

Li, P. et al. (1997) Cell 91, 479-489.

Citation:

If you publish research using #21422 please [let us know](#).

Related Pathway: Cancer/Apoptosis

Note: For western blotting, incubate membrane with diluted antibody in 5% nonfat milk, 1X TBS, 0.1% Tween-20 at 4°C with gentle shaking, overnight.