

#21421

Caspase 8 Antibody

Catalog: #21421-1 50µl **Orders:** order@signalwayantibody.com
#21421-2 100µl **Support:** tech@signalwayantibody.com
Storage: Store at -20°C/1 year **Web:** www.signalwayantibody.com



| Application | Species Reactivity | Source | Molecular Wt. |
|-------------|--------------------|---------------------|---------------|
| WB | Human | Rabbit Polyconal Ab | 57 45KD |

Description: Antibodies were produced by immunizing rabbits with synthetic peptide and KLH conjugates. Antibodies were purified by affinity-chromatography using epitope-specific peptide.

Recommended Dilutions:

Western blotting 1:1000

Specificity: The antibody detects endogenous level of total Caspase 8 protein.

Immunogen: Peptide sequence around aa.217~221 (S-E-S-Q-T) derived from Caspase 8.

Formulation: Supplied at 1.0mg/mL in phosphate buffered saline (without Mg²⁺ and Ca²⁺), pH 7.4, 150mM NaCl, 0.02% sodium azide and 50% glycerol.

Synonyms: ICE-like apoptotic protease 5

Accession No.: Swiss-Prot#:Q14790 NCBI Gene#: 841
NCBI Protein#: NP_001219.2

Background: Most upstream protease of the activation cascade of caspases responsible for the TNFRSF6/FAS mediated and TNFRSF1A induced cell death. Binding to the adapter molecule FADD recruits it to either receptor. The resulting aggregate called death-inducing signaling complex (DISC) performs CASP8 proteolytic activation. The active dimeric enzyme is then liberated from the DISC and free to activate downstream apoptotic proteases. Proteolytic fragments of the N-terminal propeptide (termed CAP3, CAP5 and CAP6) are likely retained in the DISC. Cleaves and activates CASP3, CASP4, CASP6, CASP7, CASP9 and CASP10. May participate in the GZMB apoptotic pathways. Cleaves ADPRT. Hydrolyzes the small-molecule substrate, Ac-Asp-Glu-Val-Asp-|-AMC. Likely target for the cowpox virus CRMA death inhibitory protein. Isoform 5, isoform 6, isoform 7 and isoform 8 lack the catalytic site and may interfere with the pro-apoptotic activity of the complex.

References:

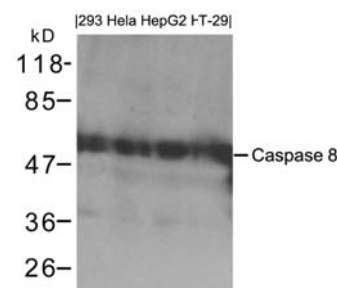
Sanchez, I. et al. *Neuron* 22: 623-633, 1999.
Varfolomeev, E. E. et al. *Immunity* 9: 267-276, 1998.

Citation:

If you publish research using #21421 please [let us know](#).

Related Pathway: Cancer/Apoptosis

Note: For western blotting, incubate membrane with diluted antibody in 5% nonfat milk, 1X TBS, 0.1% Tween-20 at 4°C with gentle shaking, overnight.



Western blot analysis of extracts from 293, HeLa, HepG2 and HT-29 cells using Caspase 8 Antibody #21421.