

#21420

Caspase 3 Antibody

Catalog: #21420-1 50µl **Orders:** order@signalwayantibody.com
#21420-2 100µl **Support:** tech@signalwayantibody.com
Storage: Store at -20°C/1 year **Web:** www.signalwayantibody.com



Application	Species Reactivity	Source	Molecular Wt.
WB	Human	Rabbit Polyconal Ab	35 19 17KD

Description: Antibodies were produced by immunizing rabbits with synthetic peptide and KLH conjugates. Antibodies were purified by affinity-chromatography using epitope-specific peptide.

Specificity: The antibody detects endogenous level of total Caspase 3 protein.

Immunogen: Peptide sequence around aa.29~33 (S-G-I-S-L) derived from Caspase 3.

Formulation: Supplied at 1.0mg/mL in phosphate buffered saline (without Mg²⁺ and Ca²⁺), pH 7.4, 150mM NaCl, 0.02% sodium azide and 50% glycerol.

Synonyms: Apopain

Accession No.: Swiss-Prot#:P42574 NCBI Gene#: 836
NCBI Protein#: NP_004337.2

Background: Involved in the activation cascade of caspases responsible for apoptosis execution. At the onset of apoptosis it proteolytically cleaves poly(ADP-ribose) polymerase (PARP) at a '216-Asp-I-Gly-217' bond. Cleaves and activates sterol regulatory element binding proteins (SREBPs) between the basic helix-loop-helix leucine zipper domain and the membrane attachment domain. Cleaves and activates caspase-6, -7 and -9. Involved in the cleavage of huntingtin.

References:

Gervais, F. G et al. Cell 97: 395-406, 1999.
Nicholson, D. W. et al. (1995) Nature 376, 37-43.

Citation:

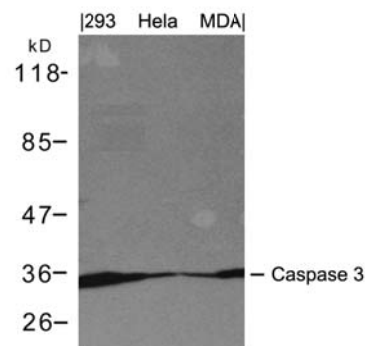
If you publish research using #21420 please [let us know](#).

Related Pathway: Cancer/Apoptosis

Note: For western blotting, incubate membrane with diluted antibody in 5% nonfat milk, 1X TBS, 0.1% Tween-20 at 4°C with gentle shaking, overnight.

Recommended Dilutions:

Western blotting 1:1000



Western blot analysis of extracts from 293, HeLa and MDA cells using Caspase 3 Antibody #21420.