

#21417

H2B Antibody

Catalog: #21417-1 50µl **Orders:** order@signalwayantibody.com
#21417-2 100µl **Support:** tech@signalwayantibody.com
Storage: Store at -20°C/1 year **Web:** www.signalwayantibody.com



Application	Species Reactivity	Source	Molecular Wt.
WB	Human Mouse Rat	Rabbit Polyconal Ab	14KD

Description: Antibodies were produced by immunizing rabbits with synthetic peptide and KLH conjugates. Antibodies were purified by affinity-chromatography using epitope-specific peptide.

Recommended Dilutions:

Western blotting 1:500~1:1000

Specificity: The antibody detects endogenous level of total H2B protein.

Immunogen: Peptide sequence around aa.41~45 (Y-V-Y-K-V) derived from Human H2B.

Formulation: Supplied at 1.0mg/mL in phosphate buffered saline (without Mg²⁺ and Ca²⁺), pH 7.4, 150mM NaCl, 0.02% sodium azide and 50% glycerol.

Synonyms: H2BQ GL105 H2B.1 H2BFQ H2BGL105

Accession No.: Swiss-Prot#: P33778 NCBI Gene#: 8349
NCBI Protein#: NP_003519.1

Background: Core component of nucleosome. Nucleosomes wrap and compact DNA into chromatin, limiting DNA accessibility to the cellular machineries which require DNA as a template. Histones thereby play a central role in transcription regulation, DNA repair, DNA replication and chromosomal stability. DNA accessibility is regulated via a complex set of post-translational modifications of histones, also called histone code, and nucleosome remodeling.

References:

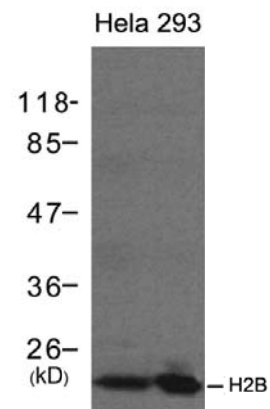
Borchert GM, et al. (2010) PLoS One.5(7):e11641.
Pennini ME, et al. (2010) PLoS Pathog.6(7):e1000995.
Lu C, et al. (2010) Sci China Life Sci.53(6):663-8.

Citation:

If you publish research using #21417 please [let us know](#).

Related Pathway:

Note: For western blotting, incubate membrane with diluted antibody in 5% nonfat milk, 1X TBS, 0.1% Tween-20 at 4°C with gentle shaking, overnight.



Western blot analysis of extracts from HeLa and 293 cells using H2B antibody #21417.