

#21415

BMAL1 Antibody

Catalog: #21415-1 50µl **Orders:** order@signalwayantibody.com
#21415-2 100µl **Support:** tech@signalwayantibody.com
Storage: Store at -20°C/1 year **Web:** www.signalwayantibody.com



Application	Species Reactivity	Source	Molecular Wt.
WB	Human Mouse Rat	Rabbit Polyconal Ab	69KD

Description: Antibodies were produced by immunizing rabbits with synthetic peptide and KLH conjugates. Antibodies were purified by affinity-chromatography using epitope-specific peptide.

Recommended Dilutions:

Western blotting 1:500~1:1000

Specificity: The antibody detects endogenous level of total BMAL1 protein.

Immunogen: Peptide sequence around aa.569~573 (S-S-S-I-L) derived from Human BMAL1.

Formulation: Supplied at 1.0mg/mL in phosphate buffered saline (without Mg²⁺ and Ca²⁺), pH 7.4, 150mM NaCl, 0.02% sodium azide and 50% glycerol.

Synonyms: MOP3 BMAL1c ARNTL TIC

Accession No.: Swiss-Prot#: O00327 NCBI Gene#: 406
NCBI Protein#: NP_001025443.1

Background: ARNTL-CLOCK heterodimers activate E-box element (3'-CACGTG-5') transcription of a number of proteins of the circadian clock. This transcription is inhibited in a feedback loop by PER, and also by CRY proteins

References:

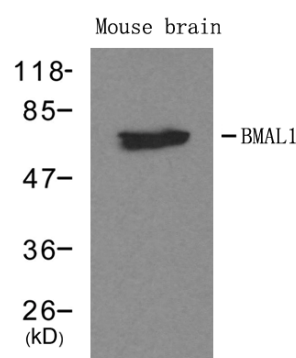
Lee S, et al. (2010) PLoS One.5(6):e10995.
Wang J, et al. (2010) Biosystems.101(2):136-43.
Jung-Hynes, et al. (2010) J Pineal Res.49(1):60-8.

Citation:

If you publish research using #21415 please [let us know](#).

Related Pathway:

Note: For western blotting, incubate membrane with diluted antibody in 5% nonfat milk, 1X TBS, 0.1% Tween-20 at 4°C with gentle shaking, overnight.



Western blot analysis of extracts from mouse brain tissue using BMAL1 antibody #21415.