

#21414

## CRY1 Antibody

**Catalog:** #21414-1 50µl **Orders:** [order@signalwayantibody.com](mailto:order@signalwayantibody.com)  
#21414-2 100µl **Support:** [tech@signalwayantibody.com](mailto:tech@signalwayantibody.com)  
**Storage:** Store at -20°C/1 year **Web:** [www.signalwayantibody.com](http://www.signalwayantibody.com)



Application	Species Reactivity	Source	Molecular Wt.
WB	Mouse	Rabbit Polyconal Ab	60KD

**Description:** Antibodies were produced by immunizing rabbits with synthetic peptide and KLH conjugates. Antibodies were purified by affinity-chromatography using epitope-specific peptide.

**Specificity:** The antibody detects endogenous level of total CRY1 protein.

**Immunogen:** Peptide sequence around aa.551~555 (S-Q-G-S-G) derived from Mouse CRY1.

**Formulation:** Supplied at 1.0mg/mL in phosphate buffered saline (without Mg<sup>2+</sup> and Ca<sup>2+</sup>), pH 7.4, 150mM NaCl, 0.02% sodium azide and 50% glycerol.

**Synonyms:** PHLL1

**Accession No.:** Swiss-Prot#: Q16526      NCBI Gene#: 12952  
NCBI Protein#: NP\_031797.1

**Background:** Blue light-dependent regulator of the circadian feedback loop. Inhibits CLOCK|NPAS2-ARNTL E box-mediated transcription. Acts, in conjunction with CRY2, in maintaining period length and circadian rhythmicity. Has no photolyase activity. Capable of translocating circadian clock core proteins such as PER proteins to the nucleus. May inhibit CLOCK|NPAS2-ARNTL transcriptional activity through stabilizing the unphosphorylated form of ARNTL

### References:

Morioka N, et al. (2010) J Pharmacol Sci.113(3):234-45.  
Fonseca F, et al. (2010) Mol Diagn Ther.14(3):171-8.  
Stratmann M, et al.(2010) Genes Dev.24(12):1317-28.

### Citation:

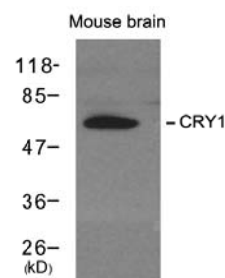
If you publish research using #21414 please [let us know](#).

### Related Pathway:

**Note:** For western blotting, incubate membrane with diluted antibody in 5% nonfat milk, 1X TBS, 0.1% Tween-20 at 4°C with gentle shaking, overnight.

### Recommended Dilutions:

Western blotting      1:500~1:1000



Western blot analysis of extracts from mouse brain tissue using CRY1 antibody #21414.