

#21413

Zinc finger CCHC domain-containing protein 10 Antibody

Catalog: #21413-1 50µl **Orders:** order@signalwayantibody.com
#21413-2 100µl **Support:** tech@signalwayantibody.com
Storage: Store at -20°C/1 year **Web:** www.signalwayantibody.com



Application	Species Reactivity	Source	Molecular Wt.
WB	Human Rat	Rabbit Polyconal Ab	20KD

Description: Antibodies were produced by immunizing rabbits with synthetic peptide and KLH conjugates. Antibodies were purified by affinity-chromatography using epitope-specific peptide.

Specificity: The antibody detects endogenous level of total Zinc finger CCHC domain-containing protein. 10.

Immunogen: Peptide sequence around aa.10~14 (A-R-R-Q-A) derived from Human Zinc finger CCHC domain-containing protein 10.

Formulation: Supplied at 1.0mg/mL in phosphate buffered saline (without Mg²⁺ and Ca²⁺), pH 7.4, 150mM NaCl, 0.02% sodium azide and 50% glycerol.

Synonyms: ZCCHC10 FLJ20094

Accession No.: Swiss-Prot#: Q5EB97 NCBI Gene#: 54819
NCBI Protein#:

Background: A member of the family of Zcchc (zinc-finger, CCHC domain-containing protein) proteins. Zcchc contains RNA-interacting motifs, and has been implicated in signalling pathways involved in cytokine expression.

References:

Hagan JP, et al. (2009) Nat Struct Mol Biol.16(10):1021-5.
Titulaer MK, et al. (2008) BMC Bioinformatics.9:133.
Li H, et al. (2009) Acta Biochim Biophys Sin (Shanghai).41(7):535-44.

Citation:

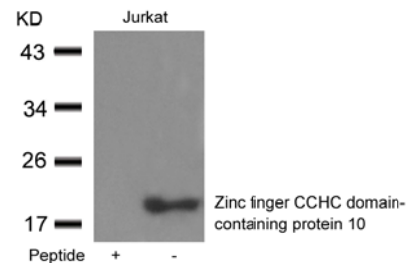
If you publish research using #21413 please [let us know](#).

Related Pathway:

Note: For western blotting, incubate membrane with diluted antibody in 5% nonfat milk, 1X TBS, 0.1% Tween-20 at 4°C with gentle shaking, overnight.

Recommended Dilutions:

Western blotting 1:500~1:1000



Western blot analysis of extracts from Jurkat cells using Zinc finger CCHC domain-containing protein 10 antibody #21413 and the same antibody preincubated with blocking peptide.