

#21412

## Coiled-coil domain-containing protein 106 Antibody

**Catalog:** #21412-1 50µl **Orders:** [order@signalwayantibody.com](mailto:order@signalwayantibody.com)  
#21412-2 100µl **Support:** [tech@signalwayantibody.com](mailto:tech@signalwayantibody.com)  
**Storage:** Store at -20°C/1 year **Web:** [www.signalwayantibody.com](http://www.signalwayantibody.com)



Application	Species Reactivity	Source	Molecular Wt.
WB	Human	Rabbit Polyconal Ab	32KD

**Description:** Antibodies were produced by immunizing rabbits with synthetic peptide and KLH conjugates. Antibodies were purified by affinity-chromatography using epitope-specific peptide.

**Specificity:** The antibody detects endogenous level of total Coiled-coil domain-containing protein. 106.

**Immunogen:** Peptide sequence around aa.2~6 (N-D-R-S-S) derived from Human Coiled-coil domain-containing protein 106.

**Formulation:** Supplied at 1.0mg/mL in phosphate buffered saline (without Mg<sup>2+</sup> and Ca<sup>2+</sup>), pH 7.4, 150mM NaCl, 0.02% sodium azide and 50% glycerol.

**Synonyms:** CCDC106 ZNF581 HSU79303

**Accession No.:** Swiss-Prot#: Q9BWC9 NCBI Gene#: 29903  
NCBI Protein#: NP\_037433.2

**Background:** CCDC106 promotes the degradation of p53 protein and inhibits its transactivity.

### References:

Martins-De-Souza D, et al. (2010) World J Biol Psychiatry. 11(5):719-28.  
Pankiv S, et al. (2010) Autophagy. 6(4).  
Eberlein A, et al. (2010) Comp Biochem Physiol B Biochem Mol Biol. 156(1):19-25.  
Smith KR, et al. (2010) Mol Cell Neurosci. 44(4):330-41.

### Citation:

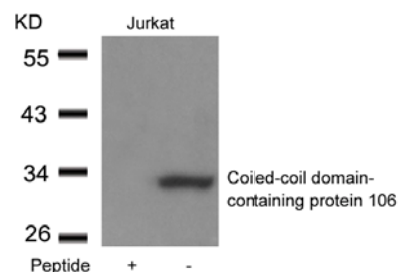
If you publish research using #21412 please [let us know](#).

### Related Pathway:

**Note:** For western blotting, incubate membrane with diluted antibody in 5% nonfat milk, 1X TBS, 0.1% Tween-20 at 4°C with gentle shaking, overnight.

### Recommended Dilutions:

Western blotting 1:500~1:1000



Western blot analysis of extracts from Jurkat cells using Coiled-coil domain-containing protein 106 antibody #21412 and the same antibody preincubated with blocking peptide.