

#21410

VEGFR-3 Antibody

Catalog: #21410-1 50µl **Orders:** order@signalwayantibody.com
#21410-2 100µl **Support:** tech@signalwayantibody.com
Storage: Store at -20°C/1 year **Web:** www.signalwayantibody.com



Application	Species Reactivity	Source	Molecular Wt.
WB	Human	Rabbit Polyconal Ab	160KD

Description: Antibodies were produced by immunizing rabbits with synthetic peptide and KLH conjugates. Antibodies were purified by affinity-chromatography using epitope-specific peptide.

Specificity: The antibody detects endogenous level of total VEGFR-3 protein.

Immunogen: Peptide sequence around aa.1279~1283 (L-A-S-E-E) derived from Human VEGFR-3.

Formulation: Supplied at 1.0mg/mL in phosphate buffered saline (without Mg²⁺ and Ca²⁺), pH 7.4, 150mM NaCl, 0.02% sodium azide and 50% glycerol.

Synonyms: PCL FLT4 FLT41 LMPH1A

Accession No.: Swiss-Prot#: P35916 NCBI Gene#: 2324
NCBI Protein#: NP_002011.2

Background: Receptor for VEGFC. Has a tyrosine-protein kinase activity.

References:

Paone A, et al. (2010) Neoplasia. 12(7):539-49.
Goyal S, et al. (2010) Arch Ophthalmol. 128(7):819-24.
Smith NR, et al. (2010) Clin Cancer Res. 16(14):3548-61.

Citation:

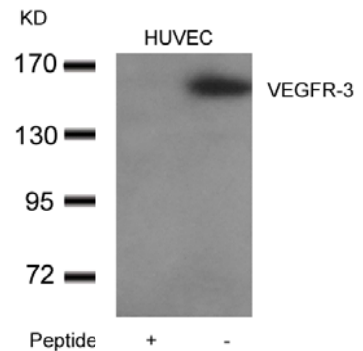
If you publish research using #21410 please [let us know](#).

Related Pathway:

Note: For western blotting, incubate membrane with diluted antibody in 5% nonfat milk, 1X TBS, 0.1% Tween-20 at 4°C with gentle shaking, overnight.

Recommended Dilutions:

Western blotting 1:500~1:1000



Western blot analysis of extracts from HUVEC cells using VEGFR-3 Antibody #21410 and the same antibody preincubated with blocking peptide.