

#21409

## Prospero homeobox protein 1 Antibody

**Catalog:** #21409-1 50µl **Orders:** [order@signalwayantibody.com](mailto:order@signalwayantibody.com)  
#21409-2 100µl **Support:** [tech@signalwayantibody.com](mailto:tech@signalwayantibody.com)  
**Storage:** Store at -20°C/1 year **Web:** [www.signalwayantibody.com](http://www.signalwayantibody.com)



Application	Species Reactivity	Source	Molecular Wt.
WB	Human Mouse	Rabbit Polyconal Ab	83KD

**Description:** Antibodies were produced by immunizing rabbits with synthetic peptide and KLH conjugates. Antibodies were purified by affinity-chromatography using epitope-specific peptide.

**Specificity:** The antibody detects endogenous level of total Prospero homeobox protein. 1 protein.

**Immunogen:** Peptide sequence around aa.723~727 (E-I-F-K-S) derived from Human Prospero homeobox protein 1.

**Formulation:** Supplied at 1.0mg/mL in phosphate buffered saline (without Mg<sup>2+</sup> and Ca<sup>2+</sup>), pH 7.4, 150mM NaCl, 0.02% sodium azide and 50% glycerol.

**Synonyms:** PROX1

**Accession No.:** Swiss-Prot#: Q92786 NCBI Gene#: 5629  
NCBI Protein#: NP\_002754.2

**Background:** May play a fundamental role in early development of CNS. May regulate gene expression and development of postmitotic undifferentiated young neurons

### References:

Charest-Marcotte A, et al. (2010) Genes Dev. 24(6):537-42.  
Huang Y, et al. (2010) Mol Vis. 16:341-52.  
Hanai S, et al. (2010) Seizure. 19(5):274-9.

### Citation:

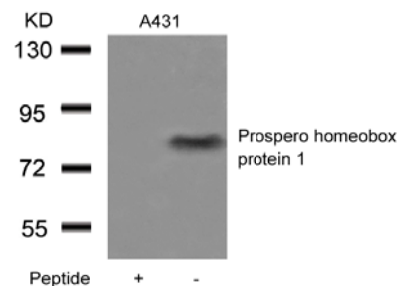
If you publish research using #21409 please [let us know](#).

### Related Pathway:

**Note:** For western blotting, incubate membrane with diluted antibody in 5% nonfat milk, 1X TBS, 0.1% Tween-20 at 4°C with gentle shaking, overnight.

### Recommended Dilutions:

Western blotting 1:500~1:1000



Western blot analysis of extracts from A431 cells using Prospero homeobox protein 1 Antibody #21409 and the same antibody preincubated with blocking peptide.