

#21408

## Melanoma-associated antigen D1 Antibody

**Catalog:** #21408-1 50µl **Orders:** [order@signalwayantibody.com](mailto:order@signalwayantibody.com)  
#21408-2 100µl **Support:** [tech@signalwayantibody.com](mailto:tech@signalwayantibody.com)  
**Storage:** Store at -20°C/1 year **Web:** [www.signalwayantibody.com](http://www.signalwayantibody.com)



Application	Species Reactivity	Source	Molecular Wt.
WB	Mouse Rat	Rabbit Polyconal Ab	95KD

**Description:** Antibodies were produced by immunizing rabbits with synthetic peptide and KLH conjugates. Antibodies were purified by affinity-chromatography using epitope-specific peptide.

**Specificity:** The antibody detects endogenous level of total Melanoma-associated antigen D1 protein.

**Immunogen:** Peptide with sequence C-EAEARAEARNRMGIGDE derived from Mouse Melanoma-associated antigen D1.

**Formulation:** Supplied at 1.0mg/mL in phosphate buffered saline (without Mg<sup>2+</sup> and Ca<sup>2+</sup>), pH 7.4, 150mM NaCl, 0.02% sodium azide and 50% glycerol.

**Synonyms:** MAGED1

**Accession No.:** Swiss-Prot#: Q9QYH6 NCBI Gene#: 94275  
NCBI Protein#: NP\_062765.1

**Background:** Involved in the apoptotic response after nerve growth factor (NGF) binding in neuronal cells. Binds p75NTR and antagonizes its association with TrkA, inhibits cell cycle progression, and facilitates p75NTR-mediated apoptosis. May act as a regulator of the function of DLX family members. May regulate p53 transcriptional activity and inhibit cell proliferation. Enhances p53 phosphorylation and accumulation.

### References:

Zhao Z, et al. (2002) Sci China C Life Sci. 45(4):412-20.  
Shen WG, et al. (2007) Cell Commun Adhes. 14(1):21-31.  
Cheresh DA, et al. (1984) J Biol Chem. 259(12):7453-9.

### Citation:

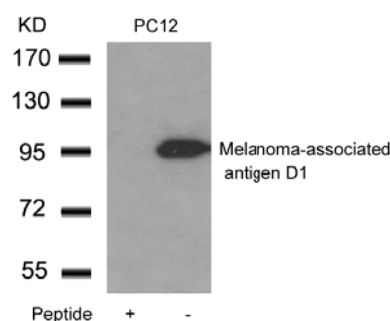
If you publish research using #21408 please [let us know](#).

### Related Pathway:

**Note:** For western blotting, incubate membrane with diluted antibody in 5% nonfat milk, 1X TBS, 0.1% Tween-20 at 4°C with gentle shaking, overnight.

### Recommended Dilutions:

Western blotting 1:500~1:1000



Western blot analysis of extracts from PC12 cells using Melanoma-associated antigen D1 Antibody #21408 and the same antibody preincubated with blocking peptide.