

#21407

Lymphatic vessel endothelial hyaluronic acid receptor 1 Antibody



Catalog: #21407-1 50µl **Orders:** order@signalwayantibody.com
#21407-2 100µl **Support:** tech@signalwayantibody.com
Storage: Store at -20°C/1 year **Web:** www.signalwayantibody.com

Application	Species Reactivity	Source	Molecular Wt.
WB	Human Mouse Rat	Rabbit Polyclonal Ab	40KD

Description: Antibodies were produced by immunizing rabbits with synthetic peptide and KLH conjugates. Antibodies were purified by affinity-chromatography using epitope-specific peptide.

Specificity: The antibody detects endogenous level of total Lymphatic vessel endothelial hyaluronic acid receptor 1 protein.

Immunogen: Peptide sequence around aa.271~275 (K-N-Q-Q-K) derived from Human Lymphatic vessel endothelial hyaluronic acid receptor 1.

Formulation: Supplied at 1.0mg/mL in phosphate buffered saline (without Mg²⁺ and Ca²⁺), pH 7.4, 150mM NaCl, 0.02% sodium azide and 50% glycerol.

Synonyms: LYVE1

Accession No.: Swiss-Prot#: Q9Y5Y7 NCBI Gene#: 10894
NCBI Protein#: NP_006682.2

Background: Ligand-specific transporter trafficking between intracellular organelles (TGN) and the plasma membrane. Plays a role in autocrine regulation of cell growth mediated by growth regulators containing cell surface retention sequence binding (CRS). May act as an hyaluronan (HA) transporter, either mediating its uptake for catabolism within lymphatic endothelial cells themselves, or its transport into the lumen of afferent lymphatic vessels for subsequent re-uptake and degradation in lymph nodes.

References:

Heindl LM, et al. (2010) Ophthalmology.117(2):334-42.
He P et al.(2006) Lin Chuang Er Bi Yan Hou Ke Za Zhi.20(18):828-30, 833.
Lim HY,et al. (2009) Am J Pathol.175(3):1328-37.

Citation:

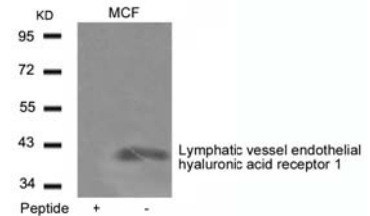
If you publish research using #21407 please [let us know](#).

Related Pathway:

Note: For western blotting, incubate membrane with diluted antibody in 5% nonfat milk, 1X TBS, 0.1% Tween-20 at 4°C with gentle shaking, overnight.

Recommended Dilutions:

Western blotting 1:500~1:1000



Western blot analysis of extracts from MCF cells using Lymphatic vessel endothelial hyaluronic acid receptor 1 Antibody #21407 and the same antibody preincubated with blocking peptide.