

#21405

PP2A-alpha Antibody

Catalog: #21405-1 50µl **Orders:** order@signalwayantibody.com
#21405-2 100µl **Support:** tech@signalwayantibody.com
Storage: Store at -20°C/1 year **Web:** www.signalwayantibody.com



Application	Species Reactivity	Source	Molecular Wt.
WB	Human Mouse Rat	Rabbit Polyconal Ab	40KD

Description: Antibodies were produced by immunizing rabbits with synthetic peptide and KLH conjugates. Antibodies were purified by affinity-chromatography using epitope-specific peptide.

Specificity: The antibody was affinity-purified from rabbit antiserum by affinity-chromatography using epitope-specific immunogen.

Immunogen: peptide Corresponding to the amino terminal sequence derived from human PP2A- α .

Formulation: Supplied at 1.0mg/mL in phosphate buffered saline (without Mg²⁺ and Ca²⁺), pH 7.4, 150mM NaCl, 0.02% sodium azide and 50% glycerol.

Synonyms: PR52A PR55A B55A B55ALPHA

Accession No.: Swiss-Prot#: P67775 NCBI Gene#: 5520
NCBI Protein#: NP_001171062.1

Background: The B regulatory subunit might modulate substrate selectivity and catalytic activity, and also might direct the localization of the catalytic enzyme to a particular subcellular compartment.

References:

Yu, X.X. et al. (2001) Mol. Biol. Cell 12, 185-199.
Tolstykh, T. et al. (2000) EMBO J. 19, 5682-5691.
Janssens, V. and Goris, J. (2001) Biochem. J. 353, 417-439.

Citation:

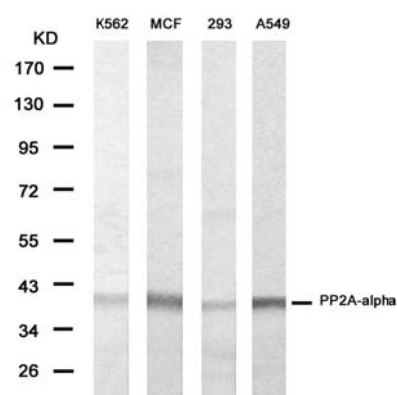
If you publish research using #21405 please [let us know](#).

Related Pathway: Kinase/Phosphatases, Akt Pathway, Insulin/Glucose, Wnt/beta-catenin

Note: For western blotting, incubate membrane with diluted antibody in 5% nonfat milk, 1X TBS, 0.1% Tween-20 at 4°C with gentle shaking, overnight.

Recommended Dilutions:

Western blotting 1:500~1:1000



Western blot analysis of extracts from K562, MCF, 293 and A549 cells using PP2A-alpha antibody #21405.