

#21403

TRPC6 Antibody

Catalog: #21403-1 50µl **Orders:** order@signalwayantibody.com
#21403-2 100µl **Support:** tech@signalwayantibody.com
Storage: Store at -20°C/1 year **Web:** www.signalwayantibody.com



Application	Species Reactivity	Source	Molecular Wt.
WB	Human Mouse Rat	Rabbit Polyconal Ab	100KD

Description: Antibodies were produced by immunizing rabbits with synthetic peptide and KLH conjugates. Antibodies were purified by affinity-chromatography using epitope-specific peptide.

Specificity: The antibody was affinity-purified from rabbit antiserum by affinity-chromatography using epitope-specific immunogen.

Immunogen: peptide Corresponding to the amino terminal sequence derived from mouse TRPC6.

Formulation: Supplied at 1.0mg/mL in phosphate buffered saline (without Mg²⁺ and Ca²⁺), pH 7.4, 150mM NaCl, 0.02% sodium azide and 50% glycerol.

Synonyms: TRP6 FSGS2 FLJ11098

Accession No.: Swiss-Prot#: Q61143 NCBI Gene#: 7225
NCBI Protein#: NP_004612.2

Background: The protein encoded by this gene forms a receptor-activated calcium channel in the cell membrane. The channel is activated by diacylglycerol and is thought to be under the control of a phosphatidylinositol second messenger system. Activation of this channel occurs independently of protein kinase C and is not triggered by low levels of intracellular calcium. Defects in this gene are a cause of focal segmental glomerulosclerosis 2 (FSGS2).

References:

Koichiro Kuwahara et al. (2006) J Clin Invest. 116(12): 3114–3126.
Mark Estacion et al. (2006) J Physiol. 2006, 572(Pt 2): 359–377.
Maria A et al. (2006) Proc Natl Acad Sci U S A. 103(44): 16586–16591.

Citation:

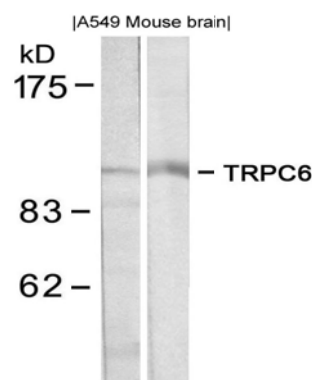
If you publish research using #21403 please [let us know](#).

Related Pathway: Channel

Note: For western blotting, incubate membrane with diluted antibody in 5% nonfat milk, 1X TBS, 0.1% Tween-20 at 4°C with gentle shaking, overnight.

Recommended Dilutions:

Western blotting 1:500~1:1000



Western blot analysis of extracts from A549 and mouse brain tissue using TRPC6 antibody #21403.