

#21333

PRL-3 Antibody

Catalog: #21333-1 50µl **Orders:** order@signalwayantibody.com
#21333-2 100µl **Support:** tech@signalwayantibody.com
Storage: Store at -20°C/1 year **Web:** www.signalwayantibody.com



Application	Species Reactivity	Source	Molecular Wt.
WB	Human Mouse	Rabbit Polyconal Ab	22KD

Description: Antibodies were produced by immunizing rabbits with synthetic peptide and KLH conjugates. Antibodies were purified by affinity-chromatography using epitope-specific peptide.

Specificity: The antibody detects transfected PRL-3 protein.

Immunogen: Peptide sequence around aa. 161-166 (K-D-P-H-T) derived from Human PTP4A3.

Formulation: Supplied at 1.0mg/mL in phosphate buffered saline (without Mg²⁺ and Ca²⁺), pH 7.4, 150mM NaCl, 0.02% sodium azide and 50% glycerol.

Synonyms: protein tyrosine phosphatase type IVA PRL3 PRL-R
PTP4A3

Accession No.: Swiss-Prot#: O75365 NCBI Gene#: 11156
NCBI Protein#: NP_116000

Background: Protein tyrosine phosphatase which stimulates progression from G1 into S phase during mitosis. Enhances cell proliferation, cell motility and invasive activity, and promotes cancer metastasis. May be involved in the progression of cardiac hypertrophy by inhibiting intracellular calcium mobilization in response to angiotensin II.

References:

Matter W.F. et.al. Biochem. Biophys. Res. Commun. 283:1061-1068(2001)
Wang J.et.al. J. Biol. Chem. 277:46659-46668(2002)

Citation:

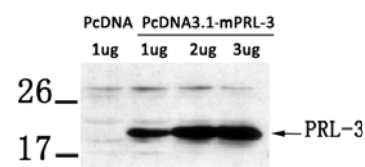
If you publish research using #21333 please [let us know](#).

Related Pathway: Kinase/Phosphatases, Cancer/Apoptosis

Note: For western blotting, incubate membrane with diluted antibody in 5% nonfat milk, 1X TBS, 0.1% Tween-20 at 4°C with gentle shaking, overnight.

Recommended Dilutions:

Western blotting 1:500~1:1000



Western blot analysis of extract from LX-2 cells transfected with PRL-3 using PRL-3 antibody #21333.